

Disease and ill health: Incidence of breast cancer

HEADLINES

- Bolton has a lower similar incidence of breast to England;
- Increases in the incidence trend at local, regional, and national level is evident;
- In the North West incidence is higher in the lesser deprived quintile of the population;
- Incidence is more common for those of White ethnicity;
- Survival has been increasing in Bolton at both 1 and 5 years;
- Breast cancer incidenc ein Bolton ios average compared to its statistical peer group;
- The highest rates in Bolton are seen in lesser dperived areas such as Blackrod and Sharples.

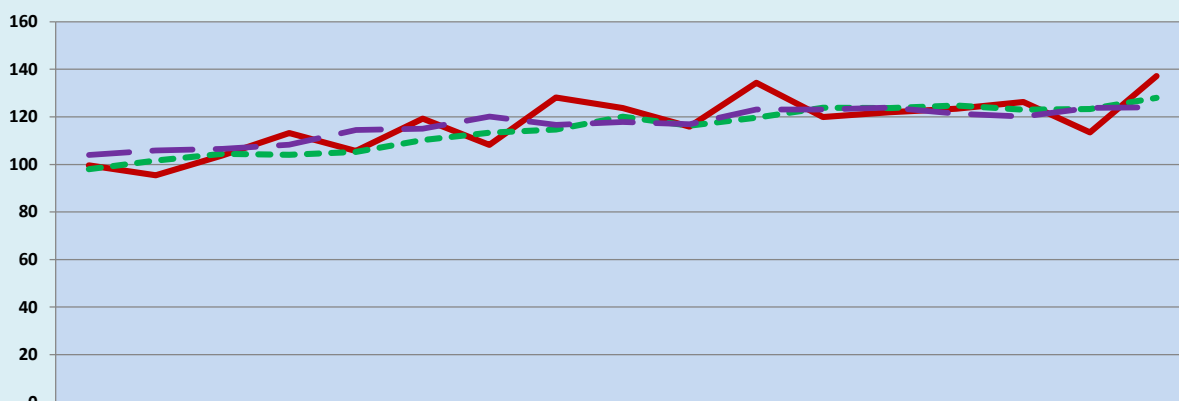
1. CURRENT PICTURE

Standardised Registration Ratio (SRR)/Directly Standardised Rate (DSR)

	SRR	DSR
BOLTON	100	125.7
North West	101	124.8
England	100	122.7

2. HISTORICAL TREND

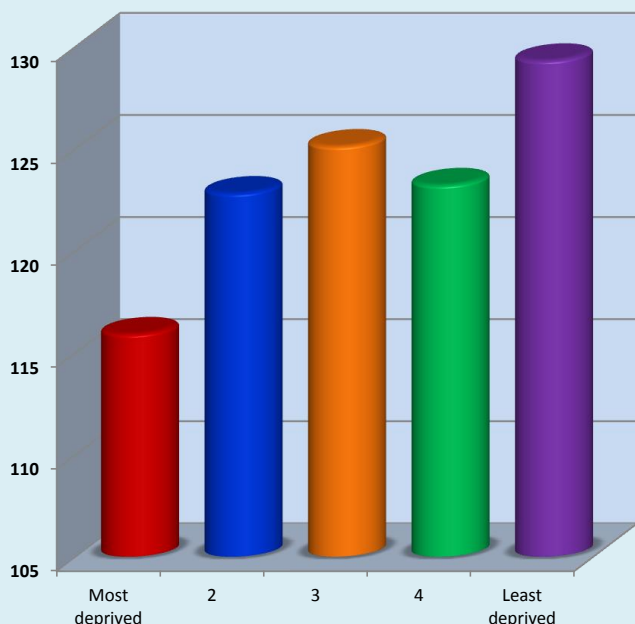
Directly Standardised Rate (DSR)



	1993	1994	1995	1996	1997	1998	1999	2000	2001	2002	2003	2004	2005	2006	2007	2008	2009
BOLTON	99.6	95.4	103.8	113.2	105.7	119.3	108.2	128.2	123.7	115.9	134.3	120.0	122.0	123.4	126.3	113.5	137.1
North West	98.1	101.6	104.4	104.1	105.3	110.2	113.3	114.7	120.0	116.3	119.6	123.9	123.8	124.8	123.0	123.3	128.0
England	104.0	105.9	106.5	108.3	114.5	115.0	120.1	116.7	117.8	116.9	123.0	123.1	123.9	121.4	120.1	123.8	124.0

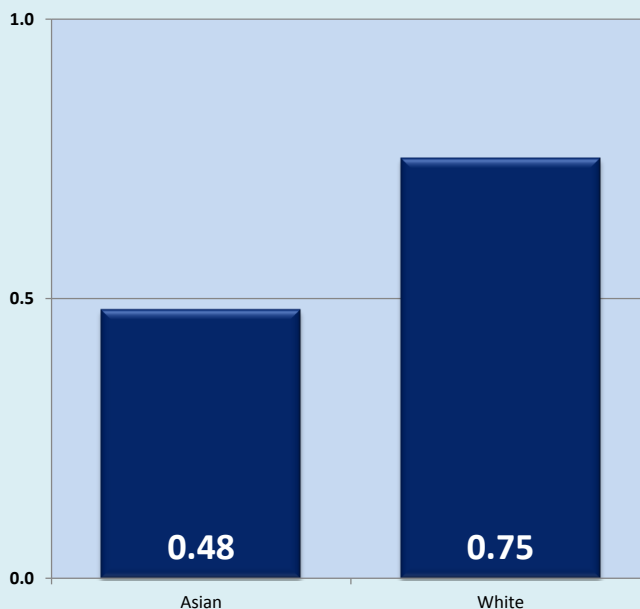
3. DEPRIVATION GROUPS

Directly Standardised Rate (DSR): North West



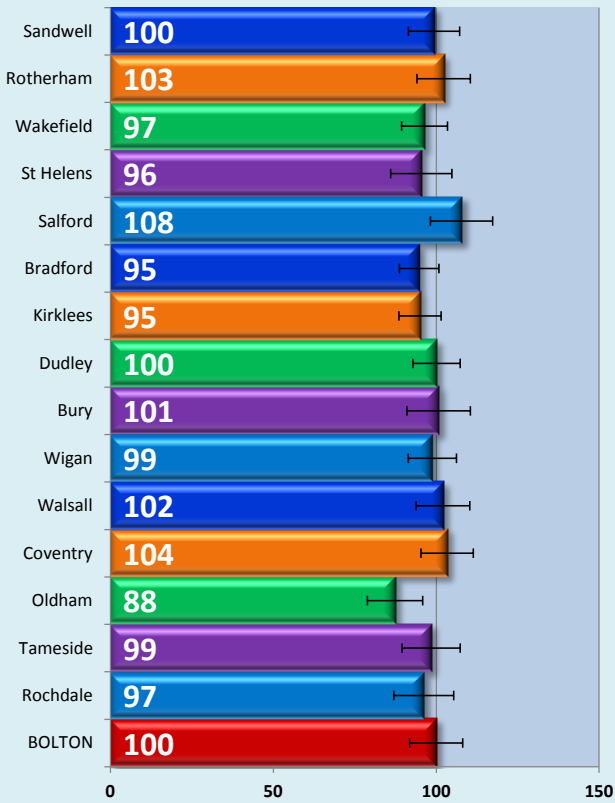
4. ETHNICITY

Incidence ratio: England



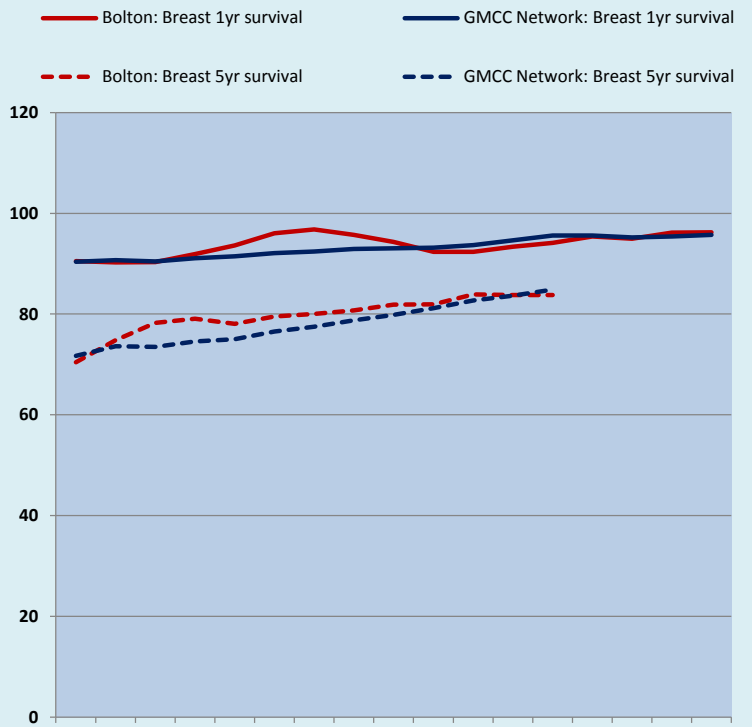
5. STATISTICAL PEERS CURRENT POSITION

Standardised Registration Ratio (SRR)



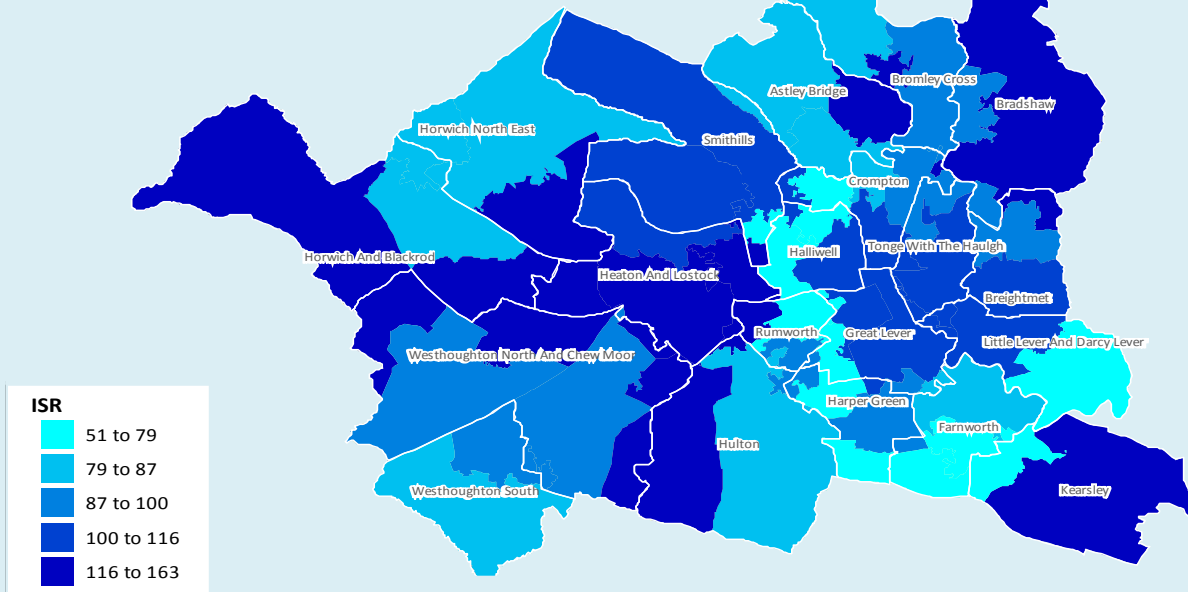
6. SURVIVAL

Age-standardised survival rates (%)



7. GEOGRAPHICAL INEQUALITIES

Hospitalised prevalence: Indirectly standardised ratio



© Crown copyright and/or database right 2009. All rights reserved. Licence number 100026920
 InSite © CACI Ltd, 2012 All rights reserved

8. NOTES

- 1.5. Source: National Centre for Health Outcomes Development (NCHOD);
2. Source: National Centre for Health Outcomes Development (NCHOD);
3. Source: NWCIS Cancer in the North West;
4. Source: NCIN - Cancer Inequalities Portal;
6. Source: National Centre for Health Outcomes Development (NCHOD);
7. Source: North West Cancer Intelligence Service (NCIS);

2007/09

1993-2009

2006/08

2007/09

1990/92-2006/08

2005-2009

**Joint Strategic
Needs Assessment**

NHS Bolton

**Bolton
Vision**