

Disease and ill health: Incidence of colorectal cancer

HEADLINES

- Incidence of colorectal cancer in Bolton is similar to the average for England;
- A small increase over time in the incidence trend at local, regional, and national level is evident;
- There does persist an inequality gradient in the North West with the most deprived having the highest incidence rate;
- For both genders cancer incidence is more common for those of White ethnicity;
- Survival is increasing in Bolton at both 1 and 5 years;
- Geographically, high rates are seen in areas of Bolton that are at both ends of the deprivation scale.

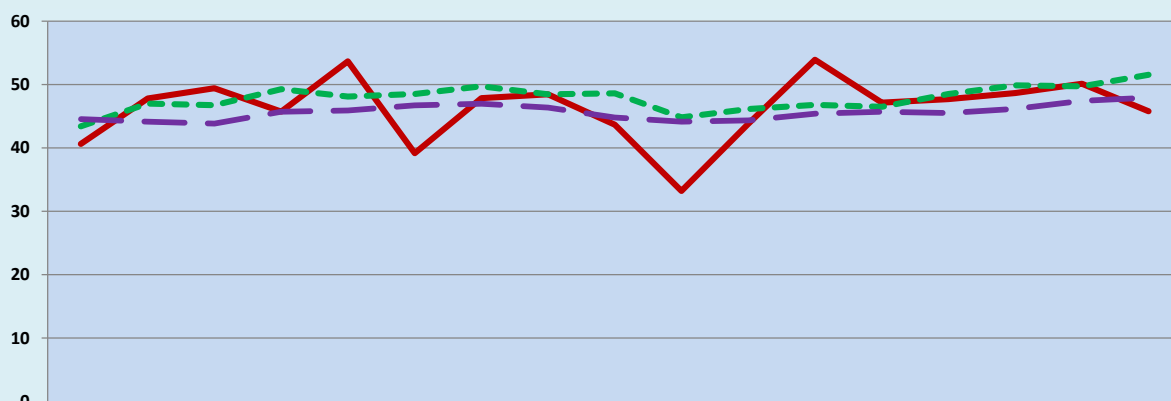
1. CURRENT PICTURE

Standardised Registration Ratio (SRR)/Directly Standardised Rate (DSR)

	SRR		DSR	
	Persons		Persons	
BOLTON	102		48.2	
North West	106		50.4	
England	100		47.2	
	Male	Female	Male	Female
BOLTON	102	104	58.7	39.2
North West	109	103	63.5	39.4
England	100	100	58.0	38.1

2. HISTORICAL TREND

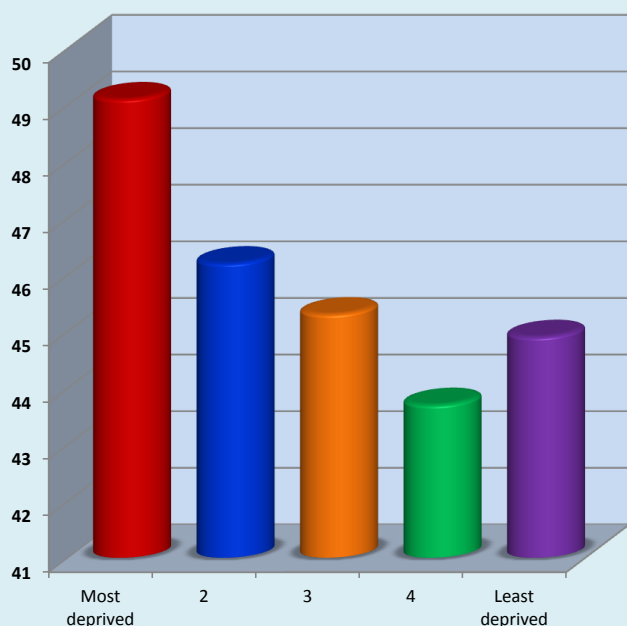
Directly Standardised Rate (DSR)



	1993	1994	1995	1996	1997	1998	1999	2000	2001	2002	2003	2004	2005	2006	2007	2008	2009
BOLTON	40.6	47.8	49.4	45.7	53.6	39.2	47.9	48.5	43.7	33.2	43.8	53.9	47.2	47.7	48.7	50.1	45.8
North West	43.4	47.0	46.8	49.3	48.1	48.5	49.7	48.4	48.6	44.8	46.1	46.8	46.5	48.5	49.9	49.7	51.5
England	44.6	44.1	43.8	45.7	45.9	46.7	47.0	46.4	44.8	44.1	44.3	45.4	45.7	45.5	46.2	47.4	47.9

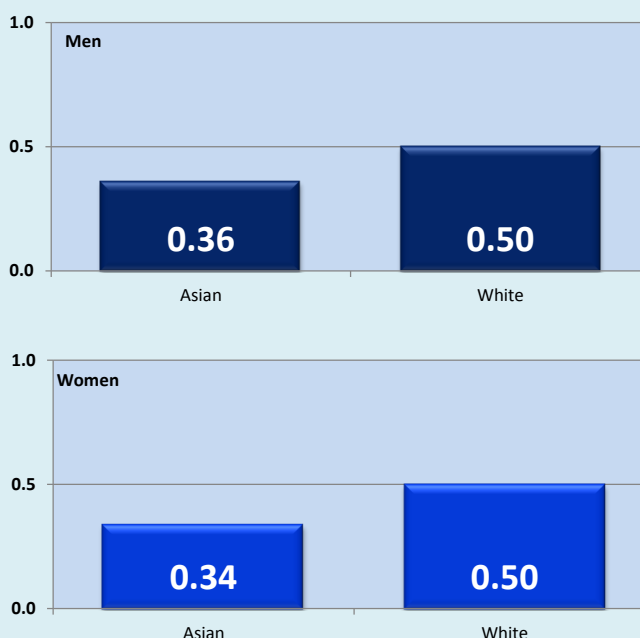
3. DEPRIVATION GROUPS

Directly Standardised Rate (DSR): North West



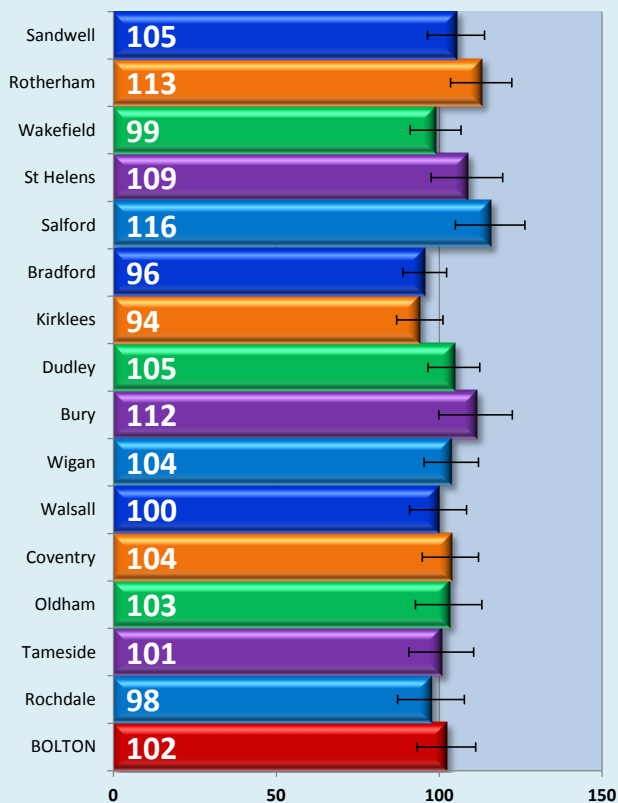
4. ETHNICITY

Incidence ratio: England



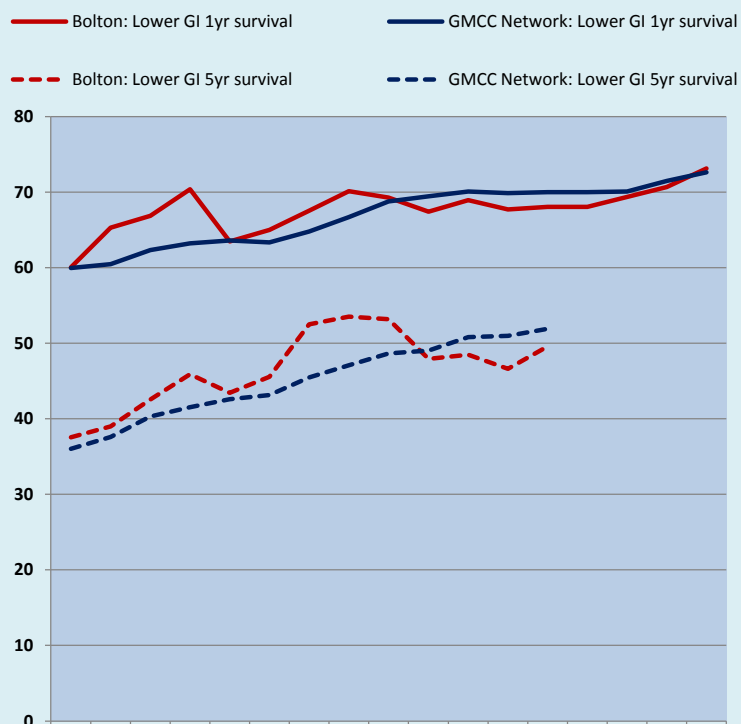
5. STATISTICAL PEERS CURRENT POSITION

Standardised Registration Ratio (SRR)



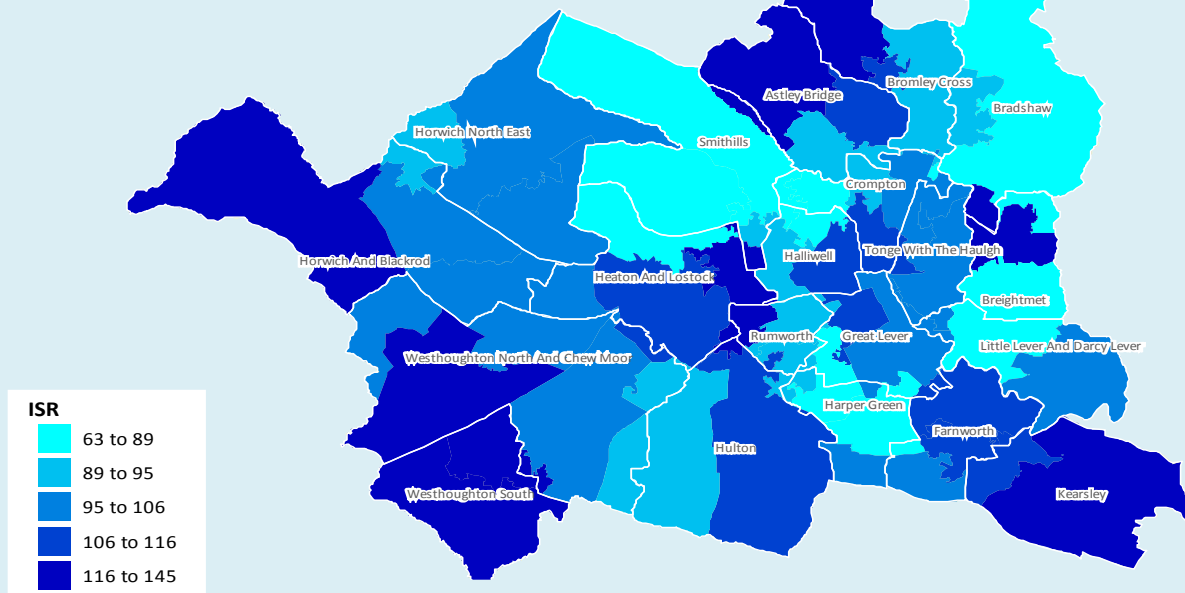
6. SURVIVAL

Age-standardised survival rates (%)



7. GEOGRAPHICAL INEQUALITIES

Hospitalised prevalence: Indirectly standardised ratio



© Crown copyright and/or database right 2009. All rights reserved. Licence number 100026920
InSite © CACI Ltd, 2012 All rights reserved

8. NOTES

- 1.5. Source: National Centre for Health Outcomes Development (NCHOD);
2. Source: National Centre for Health Outcomes Development (NCHOD);
3. Source: NWCIS Cancer in the North West;
4. Source: NCIN - Cancer Inequalities Portal;
6. Source: National Centre for Health Outcomes Development (NCHOD);
7. Source: North West Cancer Intelligence Service (NCIS);

2007/09

1993-2009

2006/08

2007/09

1990/92-2006/08

2005-2009

**Joint Strategic
Needs Assessment**

NHS Bolton

**Bolton
Vision**