

Disease and ill health: Prevalence of depression

HEADLINES

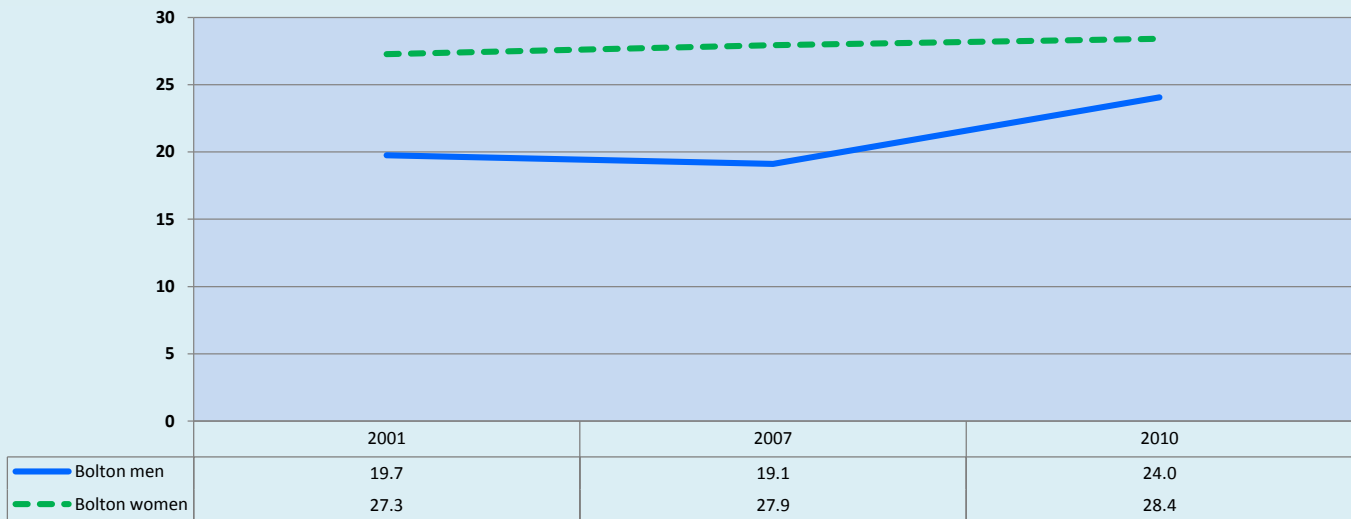
- Self-reported depression is higher in Bolton women than Bolton men, but we see an increase for men between 2007 and 2010;
- Data suggests that there is a significant level of undiagnosed depression in the Bolton population;
- There persists an inequality gradient across deprivation groups in Bolton with the most deprived having the highest prevalence of depression;
- The Asian Pakistani, Other, and White Other all have very high rates of depression in Bolton;
- In Lever Edge, Tonge Moor & Hall i'th' Wood, and Highfield & New Bury the proportion reporting depression is over 35%.

1. CURRENT PICTURE

QOF Depression (%)	
BOLTON	10.3
Self-reported nervous trouble or depression (%)	
Bolton men	24.0
Bolton women	28.4
Diagnosed and potential no. of people:	20,900 — 53,400

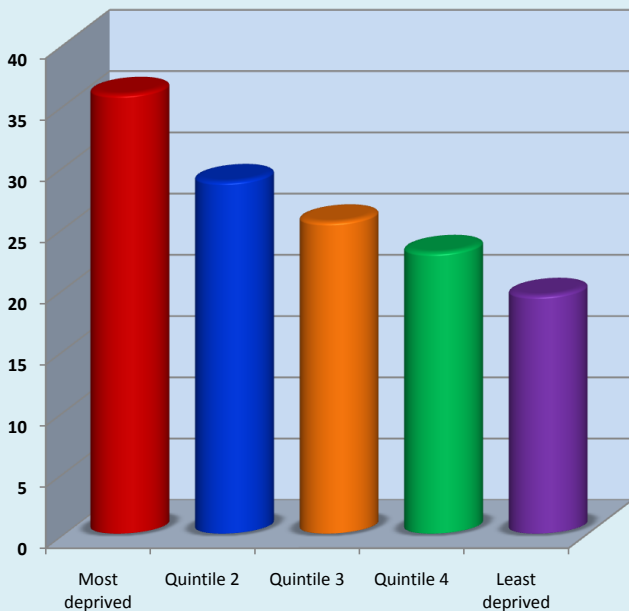
2. HISTORICAL TREND

Self-reported nervous trouble or depression: Standardised percent (%)



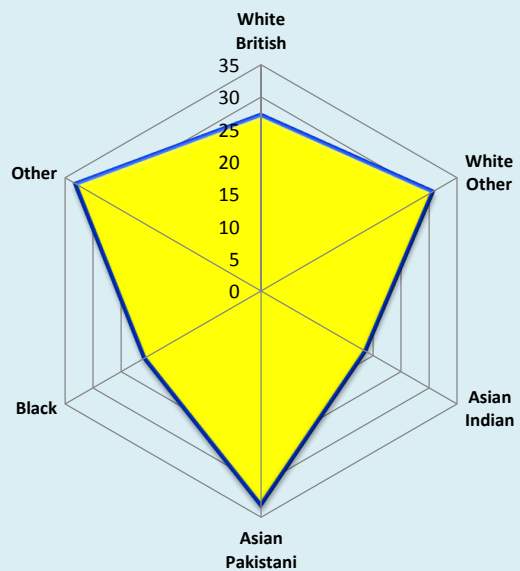
3. DEPRIVATION GROUPS

Self-reported nervous trouble or depression: Standardised percent (%)



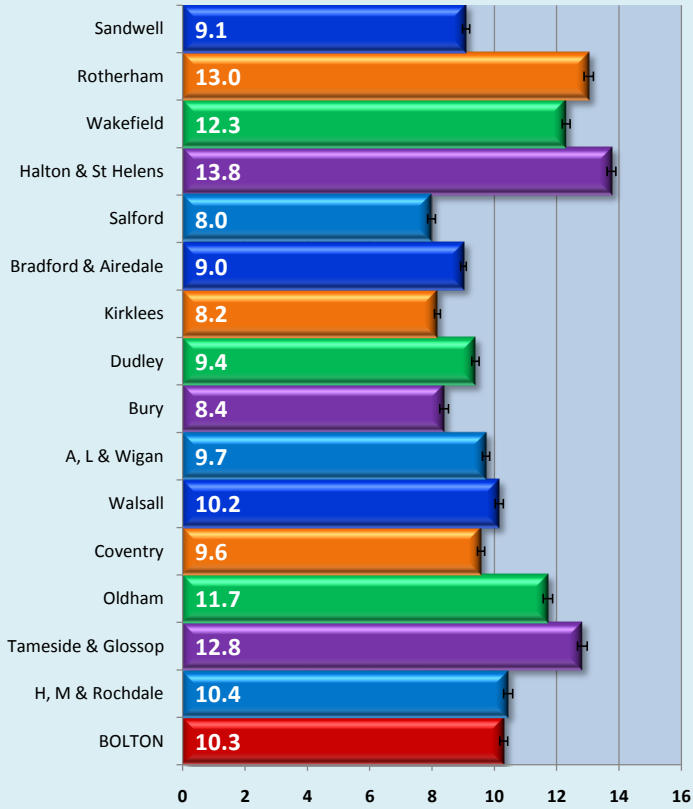
4. ETHNICITY

Self-reported nervous trouble or depression: Standardised percent (%)



5. STATISTICAL PEERS

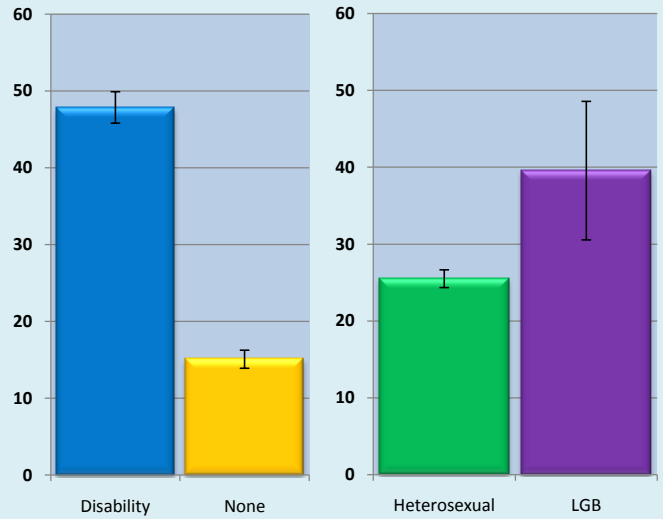
Depression: QOF (%)



6. DISABILITY AND SEXUALITY

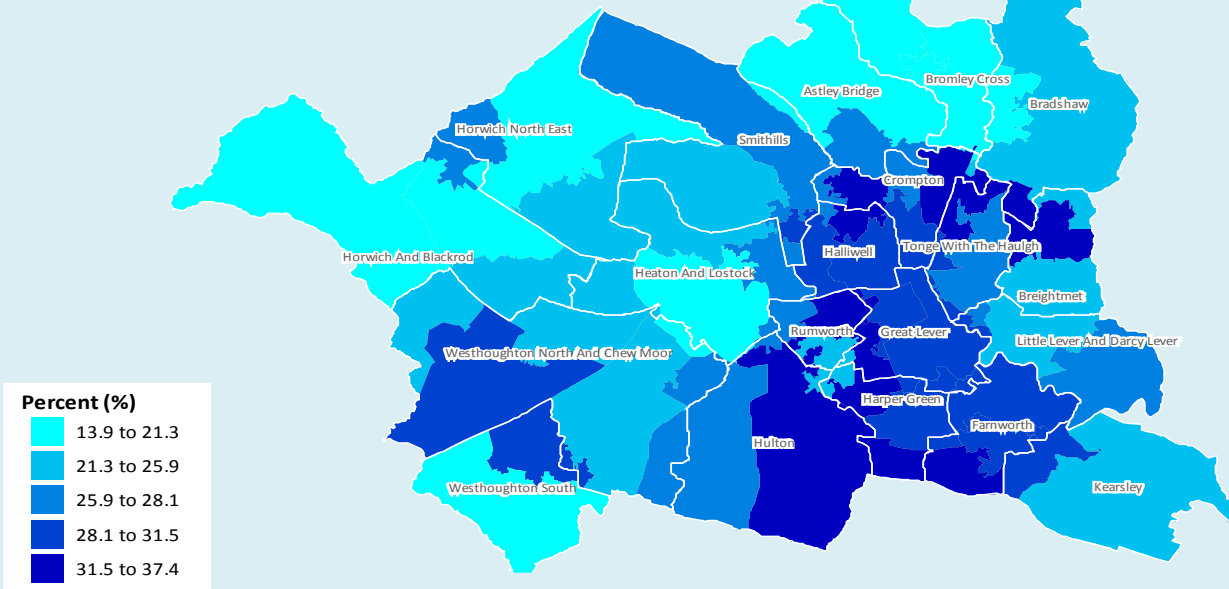
Self-reported nervous trouble or depression:
Standardised percent (%)

DISABLED		SEXUALITY	
Disability	None	Heterosexual	LGB
47.9	15.1	25.5	39.6



7. GEOGRAPHICAL INEQUALITIES

Self-reported nervous trouble or depression: Standardised percent (%)



© Crown copyright and/or database right 2009. All rights reserved. Licence number 100026920
InSite © CACI Ltd, 2011 All rights reserved

8. NOTES

1. Source: Bolton Health & Wellbeing Survey 2010;
2. Source: Bolton Health & Wellbeing Survey 2010;
- 3.4. Source: Bolton Health & Wellbeing Survey 2010;
5. Source: National Centre for Health Outcomes Development (NCHOD);
- 6.7. Source: Bolton Health & Wellbeing Survey 2010;

2010
2001,2007,2010
2010
2009/10
2010

**Joint Strategic
Needs Assessment**

NHS Bolton

**Bolton
Vision**