

# Disease and ill health: Prevalence of mental health problems

## HEADLINES

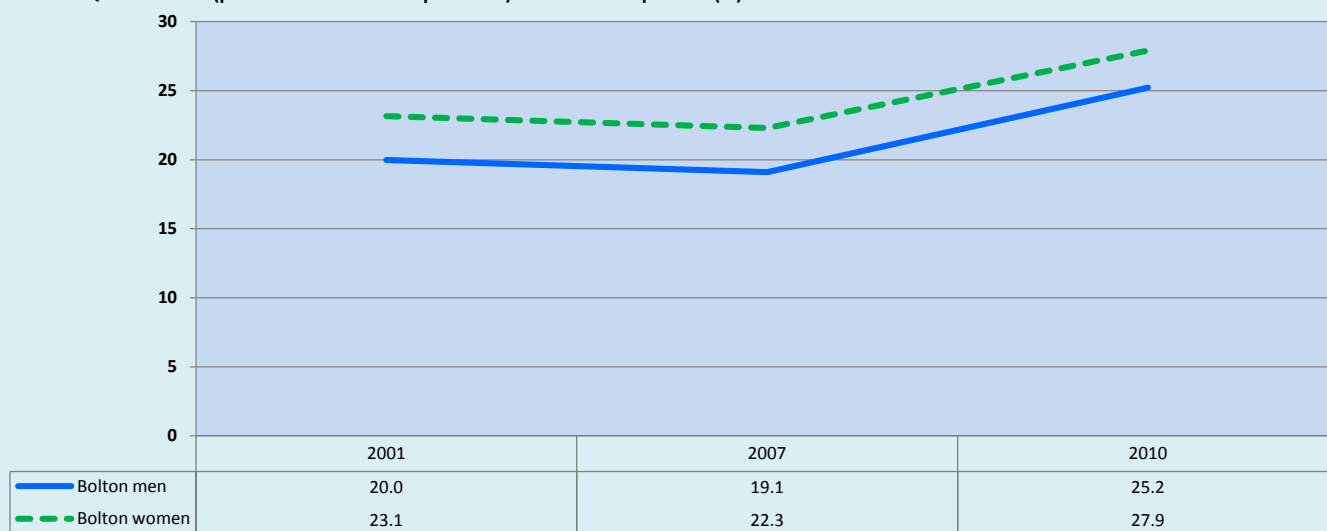
- Hospitalised prevalence of mental health conditions is higher than is average for England, but not as high as the North West;
- Since 2001 local measurement of those scoring above the GHQ12 threshold (possible mental health problems) has increased. This increase has been recent;
- There is a gradient across deprivation quintiles, and the Asian Pakistani and Other ethnicities have the highest rates locally;
- In Bolton, being disabled or LGB increases significantly the risk of mental health problems;
- In some areas of Bolton hospitalisation for mental health problems can be 290% higher than the England average.

## 1. CURRENT PICTURE

Hospitalised prevalence (ISR)	
BOLTON	123
North West	142
England	100
GHQ12 Possible mental health problems (%)	
Bolton men	25.2
Bolton women	27.9

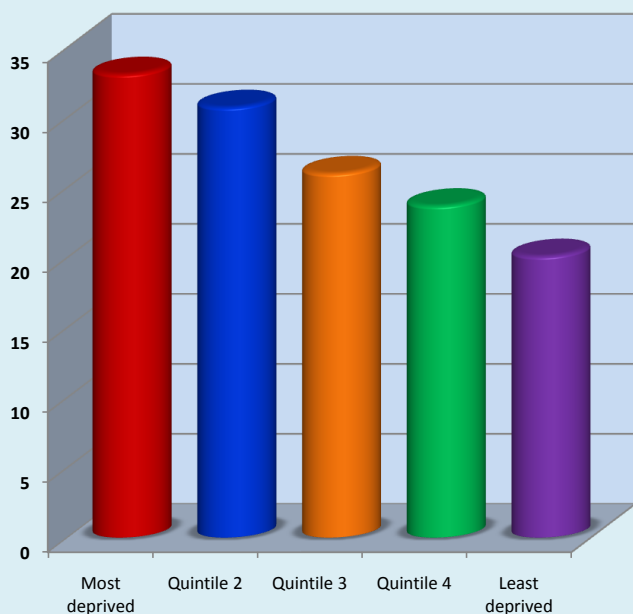
## 2. HISTORICAL TREND

Above GHQ12 threshold (possible mental health problems): Standardised percent (%)



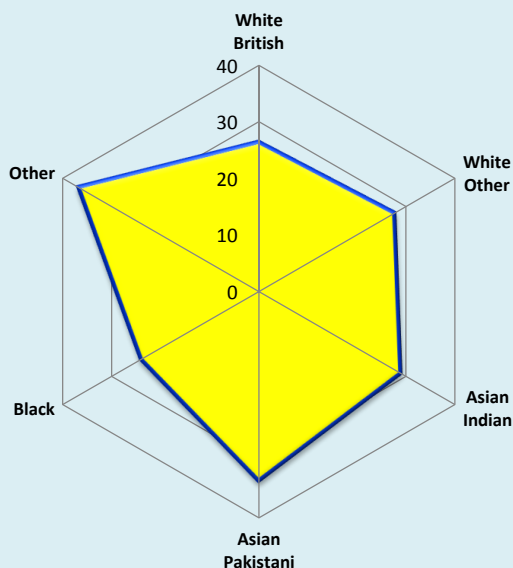
## 3. DEPRIVATION GROUPS

Above GHQ12 threshold (possible mental health problems): Standardised percent (%)



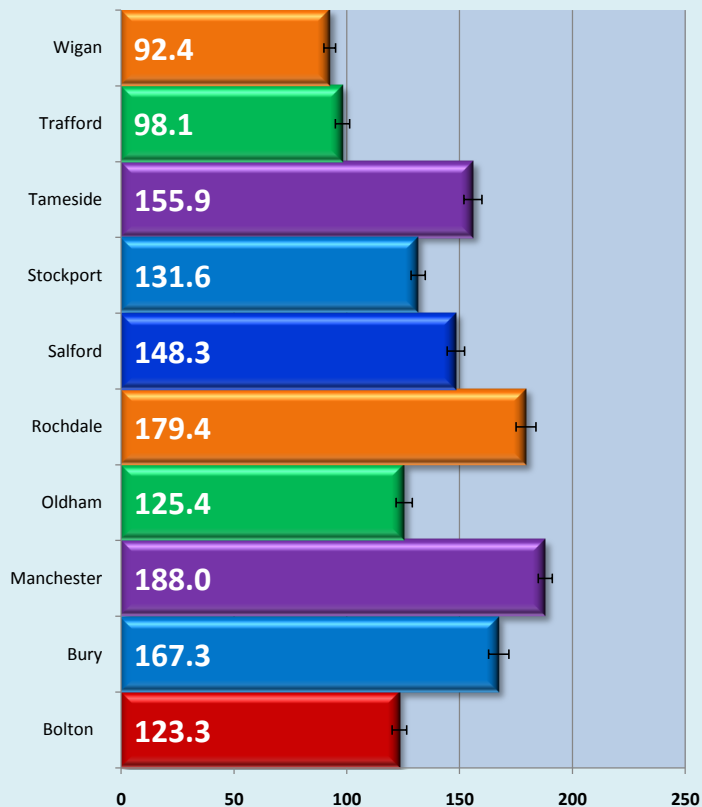
## 4. ETHNICITY

Above GHQ12 threshold (possible mental health problems): Standardised percent (%)



### 5. GREATER MANCHESTER CURRENT POSITION

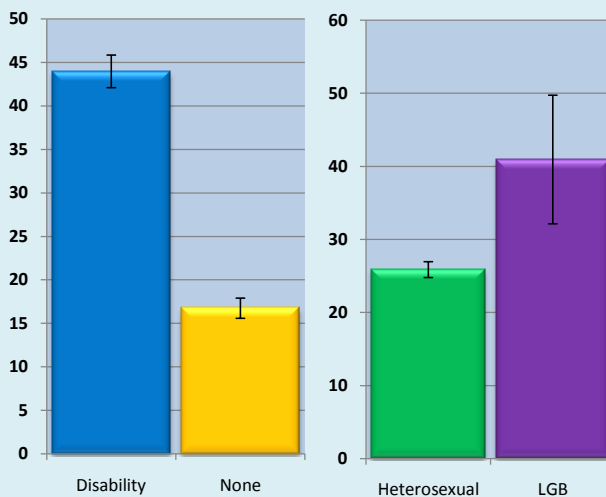
Hospitalised prevalence: Indirectly standardised ratio



### 6. DISABILITY AND SEXUALITY

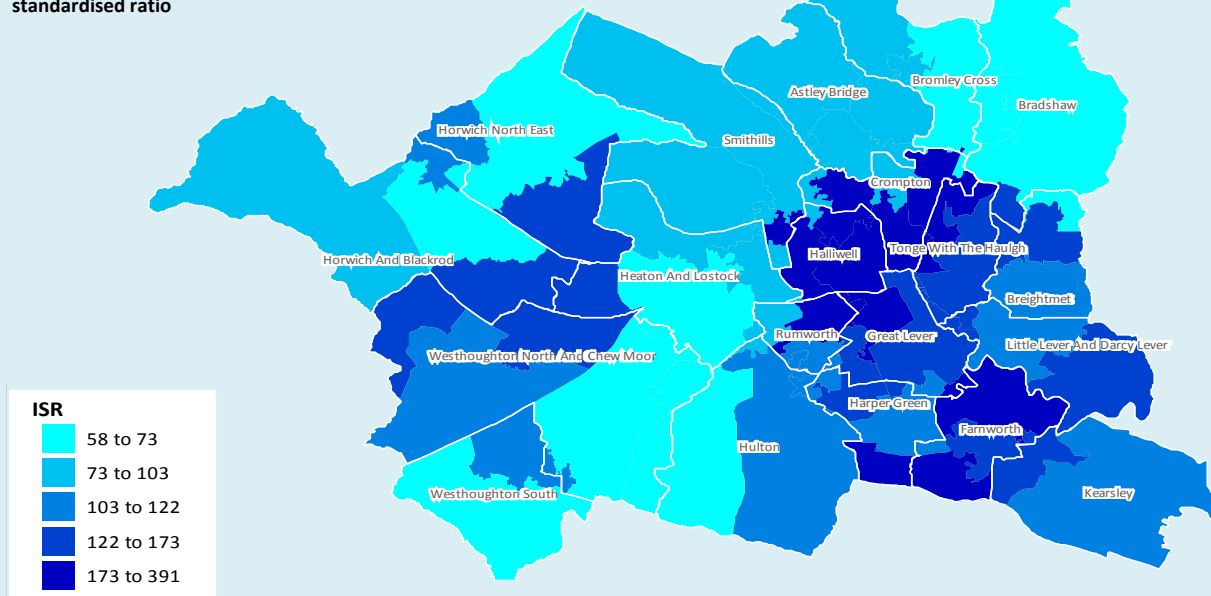
Above GHQ12 threshold (possible mental health problems): Standardised percent (%)

DISABLED		SEXUALITY	
Disability	None	Heterosexual	LGB
44.0	16.7	25.9	40.9



### 7. GEOGRAPHICAL INEQUALITIES

Hospitalised prevalence: Indirectly standardised ratio



© Crown copyright and/or database right 2009. All rights reserved. Licence number 100026920  
InSite © CACI Ltd, 2011 All rights reserved

### 8. NOTES

- Source: North West Public Health Observatory (NWPHO);
- Source: Bolton Health & Wellbeing Survey 2010;
- Source: Bolton Health & Wellbeing Survey 2010;
- Source: Bolton Health & Wellbeing Survey 2010;
- Source: North West Public Health Observatory (NWPHO);
- Source: Bolton Health & Wellbeing Survey 2010;
- Source: North West Public Health Observatory (NWPHO);

- 2003/04-2007/08
- 2001,2007,2010
- 2010
- 2003/04-2007/08
- 2010
- 2003/04-2007/08

**Joint Strategic Needs Assessment**

**NHS Bolton**

**Bolton Vision**