

# Disease and ill health: Incidence of prostate cancer

## HEADLINES

- Incidence of prostate cancer is lower in Bolton than it is in the North West and in England as a whole;
- A general increase in the incidence over time at local, regional, and national level is evident;
- Bolton has an incidence rate just below average for its statistical peer group;
- Incidence is more common for those of White ethnicity;
- The one year relative survival rate in Bolton is lower than the national average;
- The most deprived group have a lower incidence rate but also a slightly lower survival rate from prostate cancer.

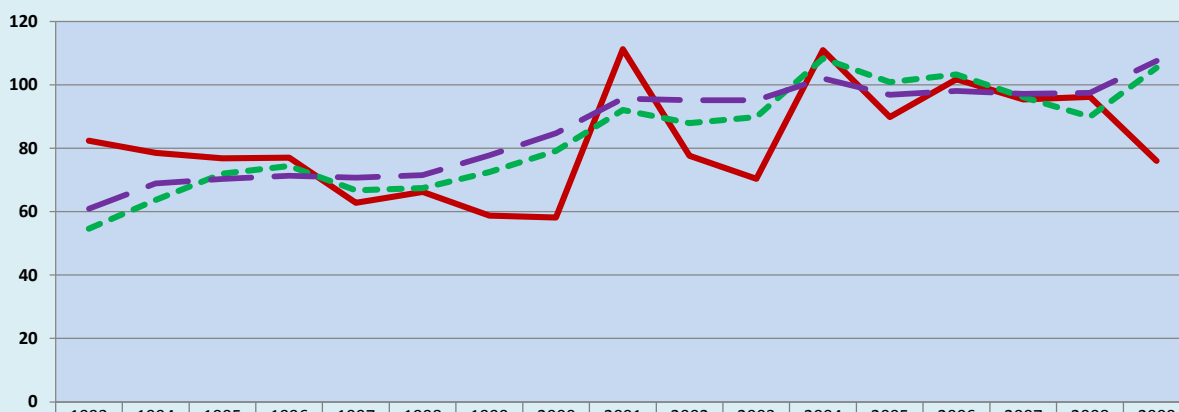
## 1. CURRENT PICTURE

Standardised Registration Ratio (SRR)/Directly Standardised Rate (DSR)

	SRR	DSR
BOLTON	88	89.2
North West	97	97.2
England	100	100.8

## 2. HISTORICAL TREND

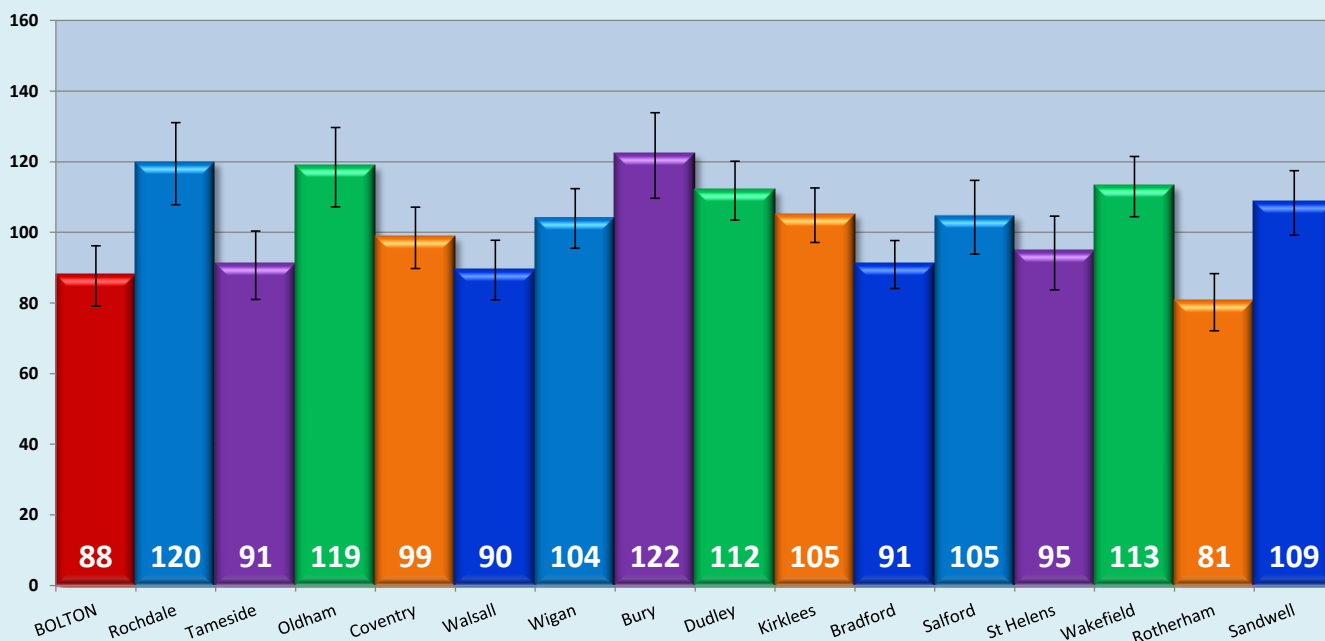
Directly Standardised Rate (DSR)



	1993	1994	1995	1996	1997	1998	1999	2000	2001	2002	2003	2004	2005	2006	2007	2008	2009
BOLTON	82.4	78.5	76.8	77.0	62.8	66.2	58.8	58.1	111.3	77.6	70.3	110.9	89.9	101.7	95.4	96.2	76.0
North West	54.6	63.7	72.0	74.4	66.7	67.4	72.5	79.1	92.1	87.9	89.8	108.3	100.9	103.3	96.1	90.0	105.4
England	60.9	69.0	70.4	71.3	70.7	71.5	77.8	84.8	95.7	95.2	95.1	102.0	96.9	98.1	97.2	97.5	107.6

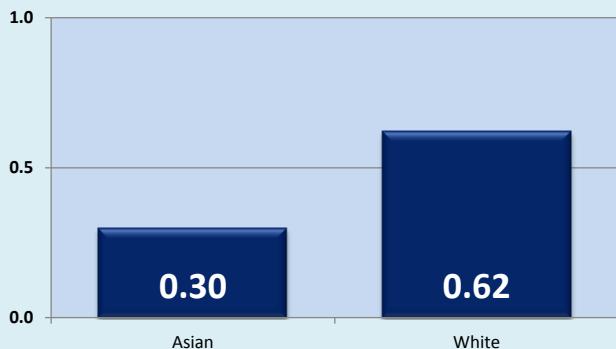
## 3. STATISTICAL PEERS CURRENT POSITION

Standardised Registration Ratio (SRR)



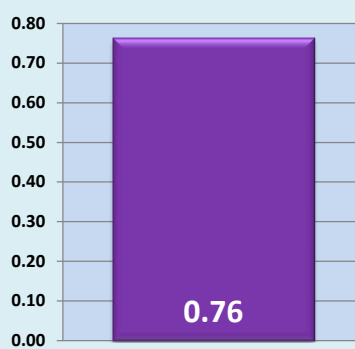
#### 4. ETHNICITY

Age-standardised Incidence Ratio: England



#### 6. DEPRIVATION GROUPS

Age-standardised Incidence Ratio: England



**Deprivation ratio**  
**Most deprived : Least deprived**

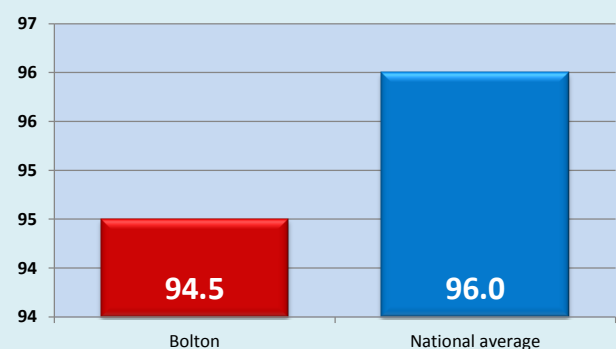
When ratio = 1, rates between the groups are the same.

When ratio < 1, rate for most deprived group is lower than least deprived (0.5 = half).

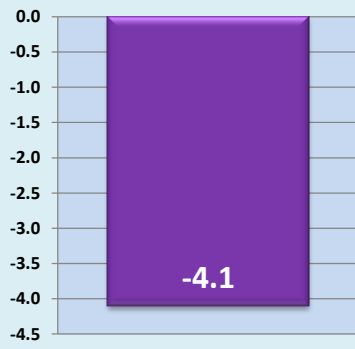
When ratio > 1, rate for most deprived is higher than least deprived (2 = double).

#### 5. SURVIVAL

One Year Relative Survival Estimate: Percentage (%)



Percent difference (%) in one year relative survival estimates between most and least deprived: England

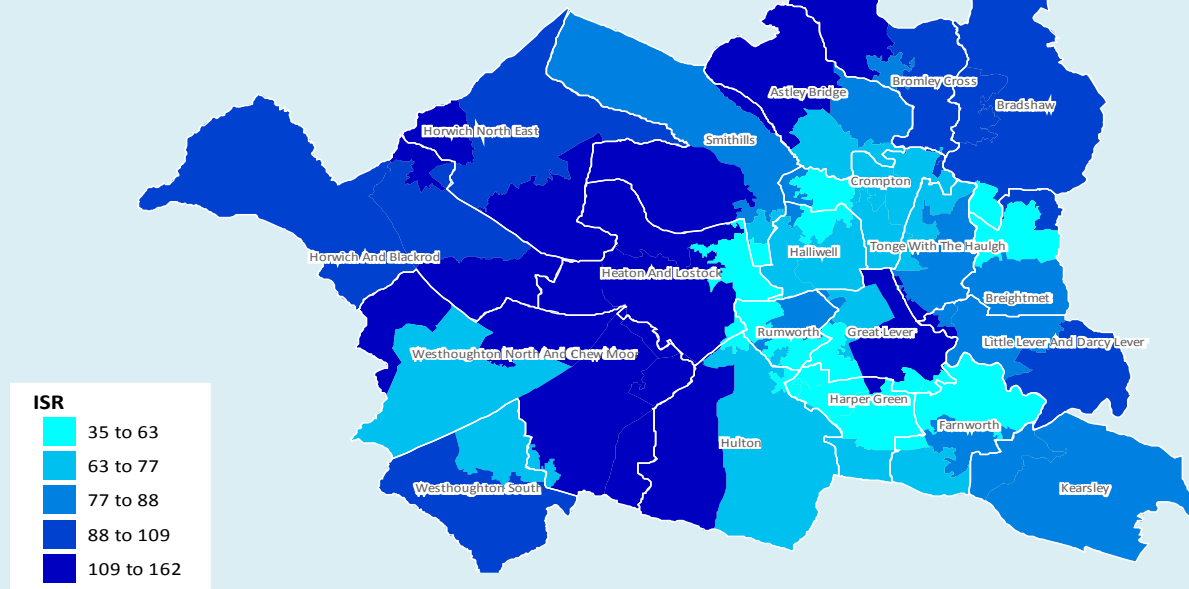


**Percentage difference**

A negative deprivation gap indicates that the most deprived have poorer relative survival.

#### 7. GEOGRAPHICAL INEQUALITIES

Hospitalised prevalence: Indirectly standardised ratio



© Crown copyright and/or database right 2009. All rights reserved. Licence number 100026920  
 InSite © CACI Ltd, 2012 All rights reserved

#### 8. NOTES

- Source: National Centre for Health Outcomes Development (NCHOD); 2007/09
- Source: National Centre for Health Outcomes Development (NCHOD); 1993-2009
- Source: National Centre for Health Outcomes Development (NCHOD); 2007/09
- 4.5.6. Source: NCIN - Cancer Inequalities Portal; 2002-2006
7. Source: North West Cancer Intelligence Service (NCIS); 2005-2009

**Joint Strategic  
Needs Assessment**

**NHS Bolton**

**Bolton  
Vision**