

Disease and ill health: Incidence of skin cancer

HEADLINES

- Incidence of skin cancer in Bolton is lower than is average for the North West region, but is still higher than England;
- Incidence has been steadily increasing nationally, regionally, and locally;
- Bolton is higher than average for its statistical peers, and many peer local authorities have rates below the national average;
- Bolton receives fewer hours of sunshine than is average for England, but the town has a much higher sunbed outlet density;
- Lesser deprived areas such as Over Hulton, Daisy Hill, Westhoughton East, Turton, and Egerton & Dunscar have the highest incidence rates locally.

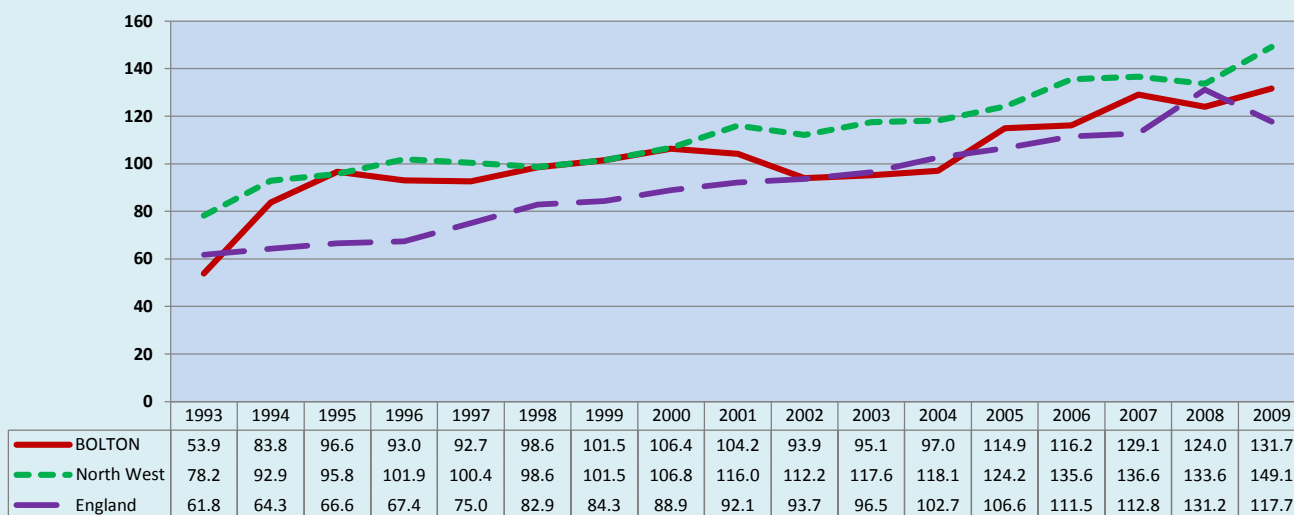
1. CURRENT PICTURE

Standardised Registration Ratio (SRR)/Directly Standardised Rate (DSR)

	SRR		DSR	
	Persons		Persons	
BOLTON	106		128.2	
North West	115		139.8	
England	100		120.5	
	Male	Female	Male	Female
BOLTON	107	105	155.5	108.8
North West	111	119	162.1	124.0
England	100	100	144.8	102.3

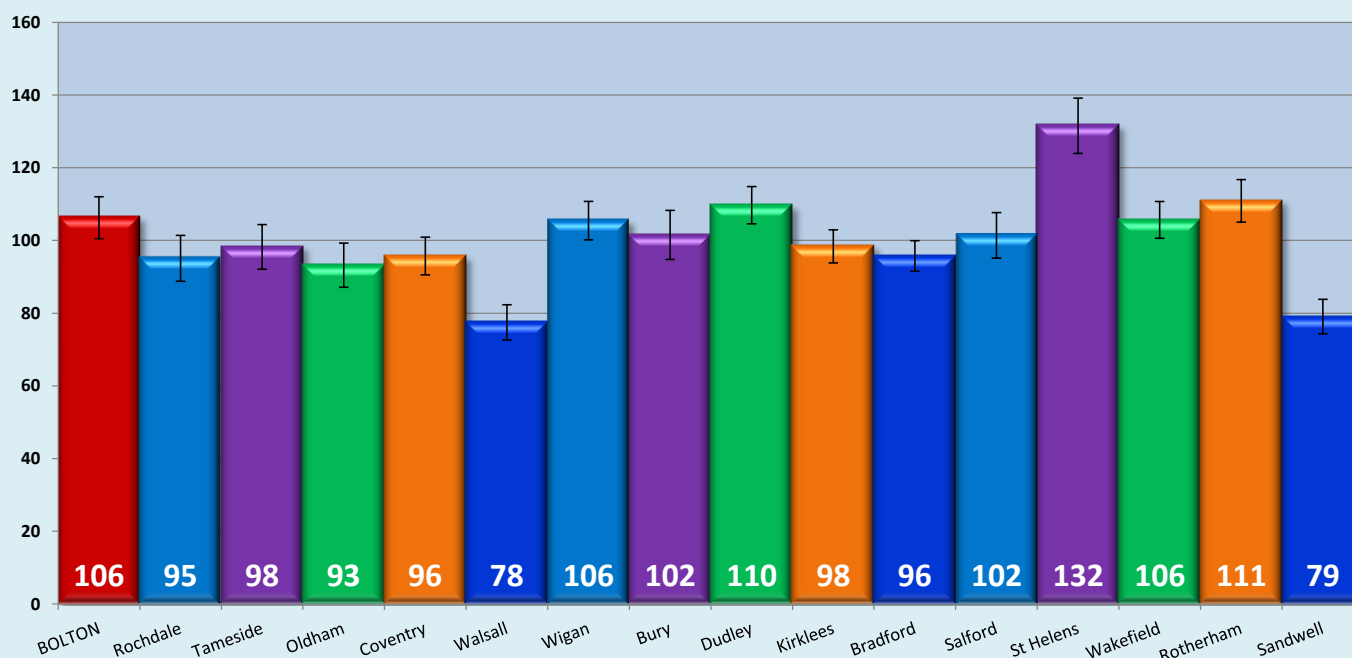
2. HISTORICAL TREND

Directly Standardised Rate (DSR)



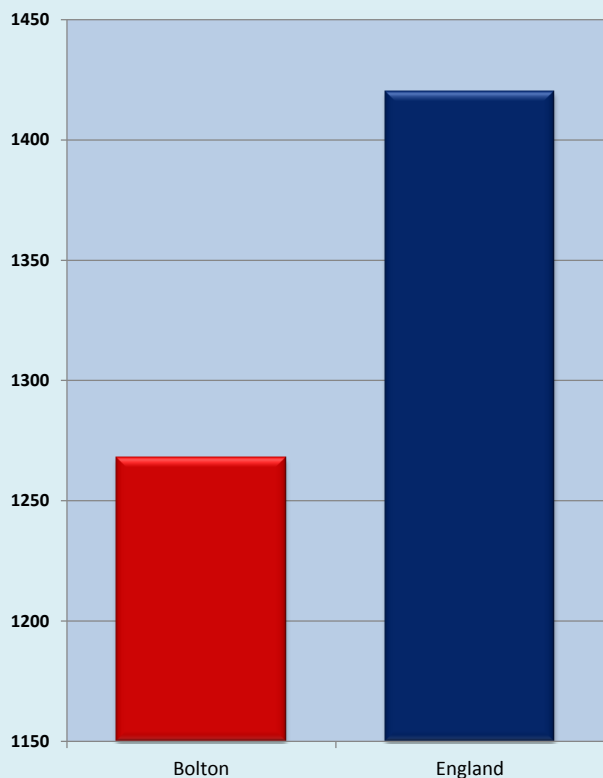
3. STATISTICAL PEERS CURRENT POSITION

Standardised Registration Ratio (SRR)



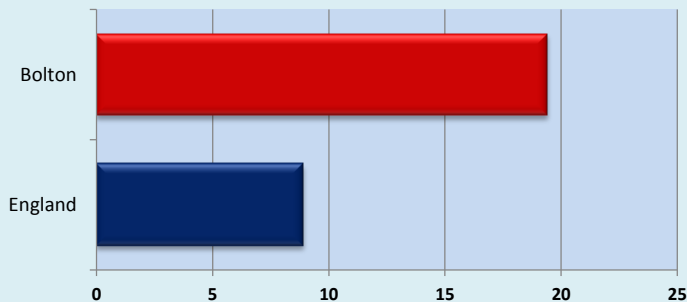
4. SUNSHINE HOURS

Sunshine Hours: Yearly average 1961-1990

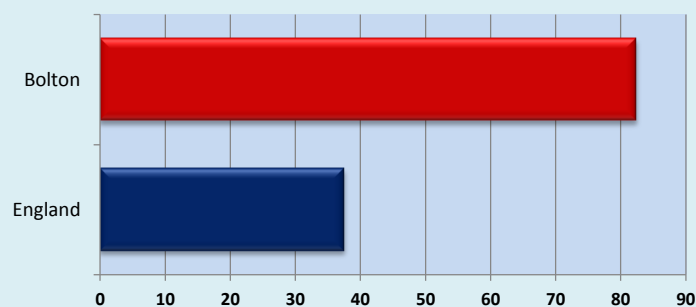


5. SUNBED OUTPUT DENSITY

Sunbed Outlet Density (Total population): sunbed outlets per 100,000 total population

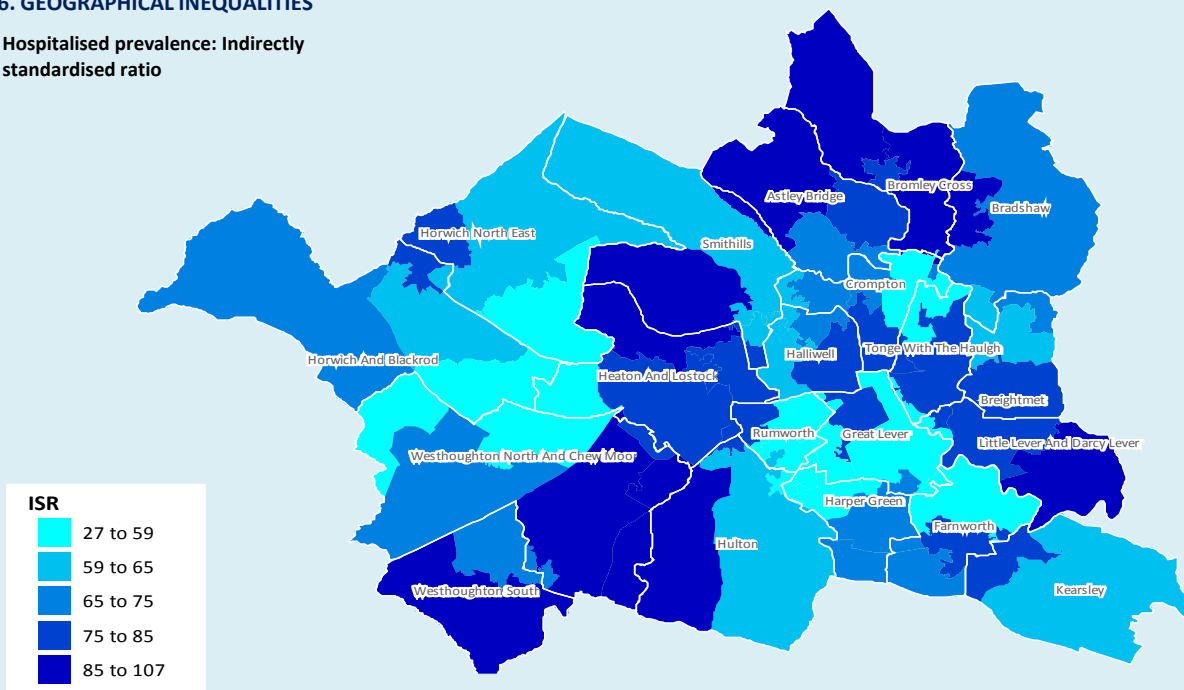


Sunbed Outlet Density (High-Risk population): sunbed outlets per 100,000 high-risk population



6. GEOGRAPHICAL INEQUALITIES

Hospitalised prevalence: Indirectly standardised ratio



© Crown copyright and/or database right 2009. All rights reserved. Licence number 100026920
InSite © CACI Ltd, 2012 All rights reserved

7. NOTES

- Source: National Centre for Health Outcomes Development (NCHOD); 2007/09
- Source: National Centre for Health Outcomes Development (NCHOD); 1993-2009
- Source: National Centre for Health Outcomes Development (NCHOD); 2007/09
- Source: SWPHO - Skin Cancer Hub; 1961-1990
- Source: SWPHO - Skin Cancer Hub; 1961-1990
- Source: North West Cancer Intelligence Service (NCIS); 2005-2009

**Joint Strategic
Needs Assessment**

NHS Bolton

**Bolton
Vision**