

# Mortality: Cardiovascular disease (CVD)

## HEADLINES

- CVD mortality in Bolton is higher than both the national and regional average;
- CVD mortality is reducing locally, regionally, and nationally, but Bolton remains high compared to England;
- In some parts of Bolton the mortality rate is up to 80% higher than the national average;
- Mortality is greatest in the more deprived areas around the Town Centre;
- The inequality gap in Bolton for CVD persists, whilst quintile 3 is beginning to show a higher mortality rate than quintile 2;
- Bolton has the 4th highest CVD mortality in its peer group.

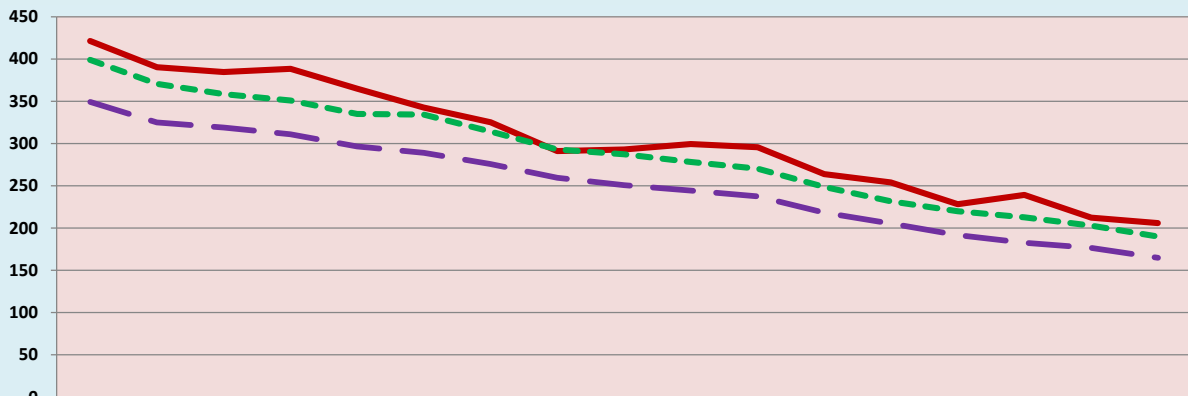
## 1. CURRENT PICTURE

Standardised mortality ratio (SMR)/Directly standardised rate (DSR)

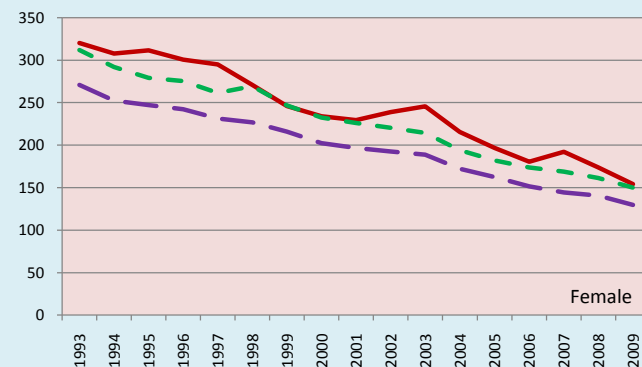
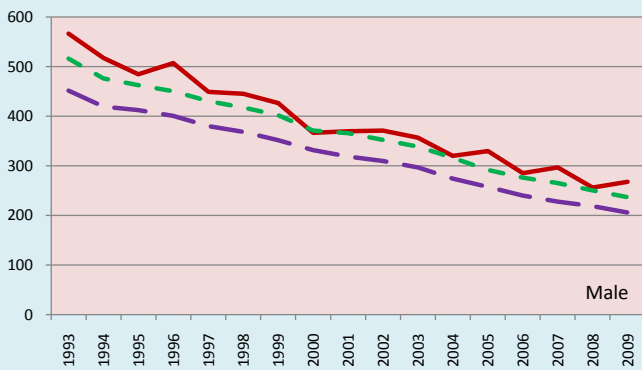
	SMR		DSR	
	Persons	Persons	Persons	Persons
BOLTON	122		219.1	
North West	114		201.8	
England	100		174.6	
	Male	Female	Male	Female
BOLTON	125	119	273.8	173.4
North West	115	113	251.0	160.1
England	100	100	217.5	138.2

## 2. HISTORICAL TREND

Directly Standardised Rate (DSR): Persons



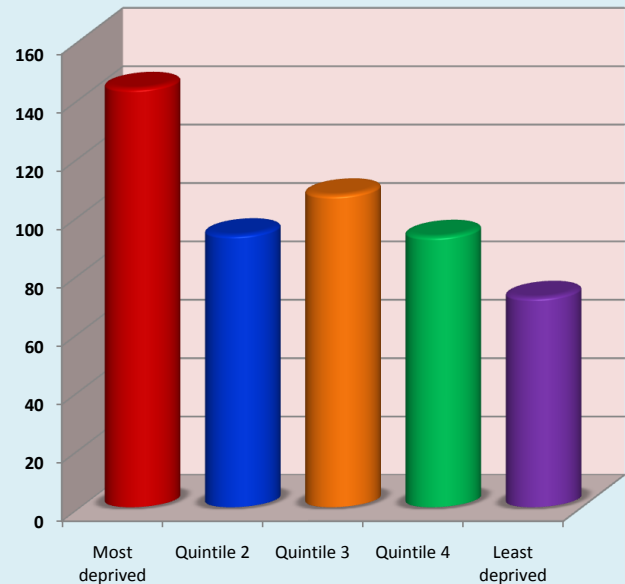
	1993	1994	1995	1996	1997	1998	1999	2000	2001	2002	2003	2004	2005	2006	2007	2008	2009
BOLTON	421.2	390.2	384.5	388.5	364.8	342.6	325.1	291.0	292.9	299.4	295.7	263.7	253.8	228.1	239.2	212.4	205.8
North West	399.1	370.6	358.4	350.7	335.0	334.2	314.1	293.1	287.2	278.2	270.2	248.6	231.5	220.0	212.7	202.8	189.8
England	349.0	324.8	318.8	311.0	296.4	288.8	275.7	259.4	250.6	244.4	237.4	218.3	205.4	191.8	182.5	176.6	164.8



## 3. DEPRIVATION GROUPS

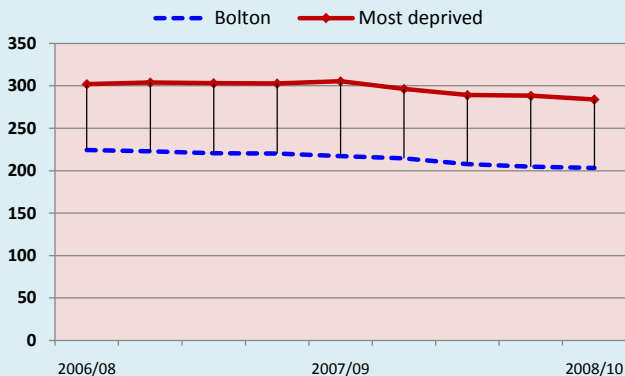
Standardised mortality ratio (SMR): Persons

Bolton = 100



#### 4. MOST DEPRIVED GROUP HISTORICAL TREND

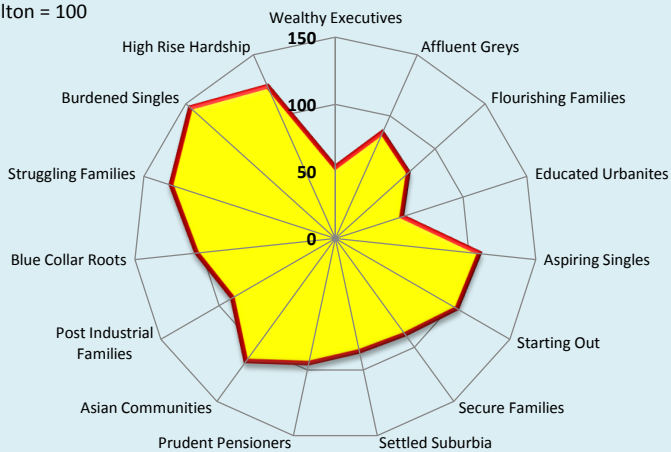
Directly Standardised Rate (DSR): Persons



#### 5. ACORN\* GEODEMOGRAPHIC GROUP

Standardised mortality ratio (SMR): Persons

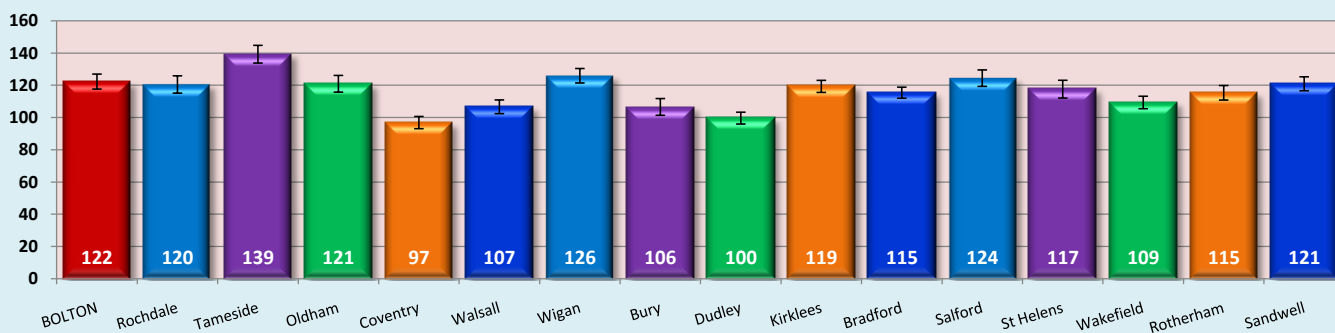
Bolton = 100



#### 6. STATISTICAL PEERS CURRENT POSITION

Standardised mortality ratio (SMR): Persons

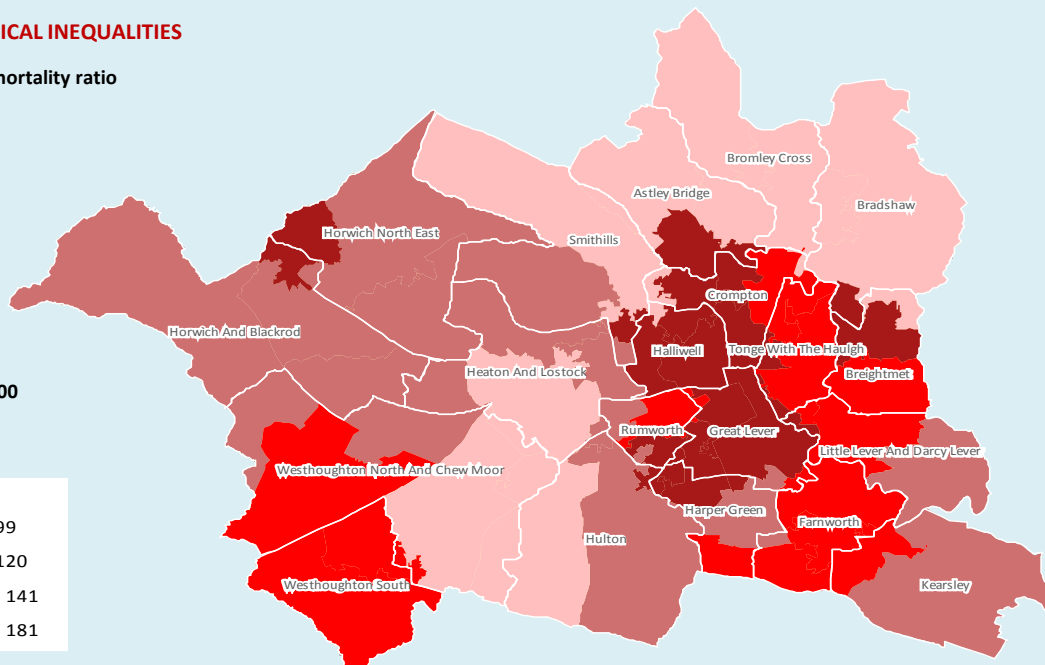
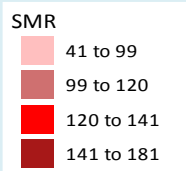
England = 100



#### 7. GEOGRAPHICAL INEQUALITIES

Standardised mortality ratio

England = 100



© Crown copyright and/or database right 2009. All rights reserved. Licence number 100026920  
InSite © CACI Ltd, 2011 All rights reserved

#### 8. NOTES

- Source: National Centre for Health Outcomes Development (NCHOD); 2007/09
- Source: National Centre for Health Outcomes Development (NCHOD); 1993-2009
- Source: Public Health Mortality File, Office of National Statistics (ONS); 2005/09
- Source: Public Health Mortality File, Office of National Statistics(ONS); 2006/10
- Source: National Centre for Health Outcomes Development (NCHOD); 2007/09
- Source: Association of Public Health Observatories (APHO); 2005/09

#### Joint Strategic Needs Assessment

