

Mortality: Cancer

HEADLINES

- Cancer mortality in Bolton is currently lower than is average for the North West region and overall is close to the England figure;
- Cancer mortality is reducing locally, regionally, and nationally, but not as quick as that historically seen in CVD-related mortality (which however is much higher);
- In some parts of Bolton the cancer mortality rate is 50% higher than the national average and the inequality gap between the most deprived group and Bolton shows no reduction over time;
- Mortality is greatest in the more deprived areas around the Town Centre;
- Bolton is better than average for its peer group.

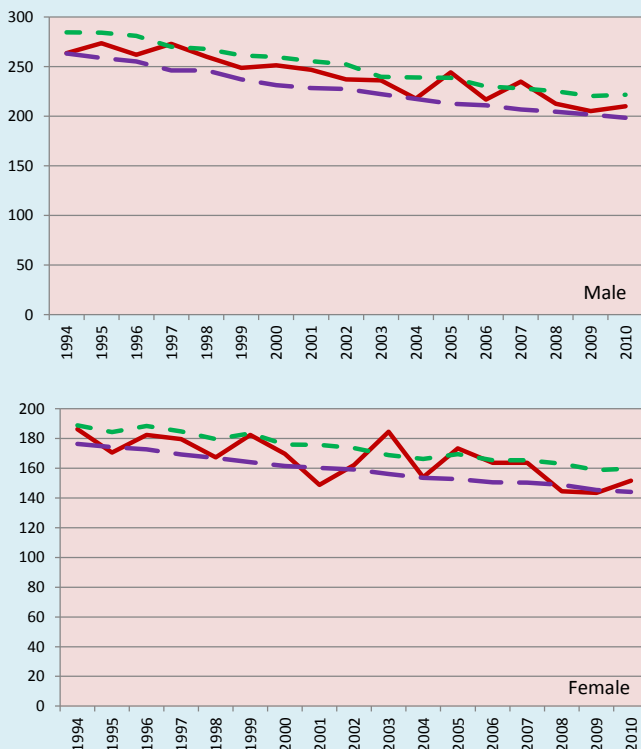
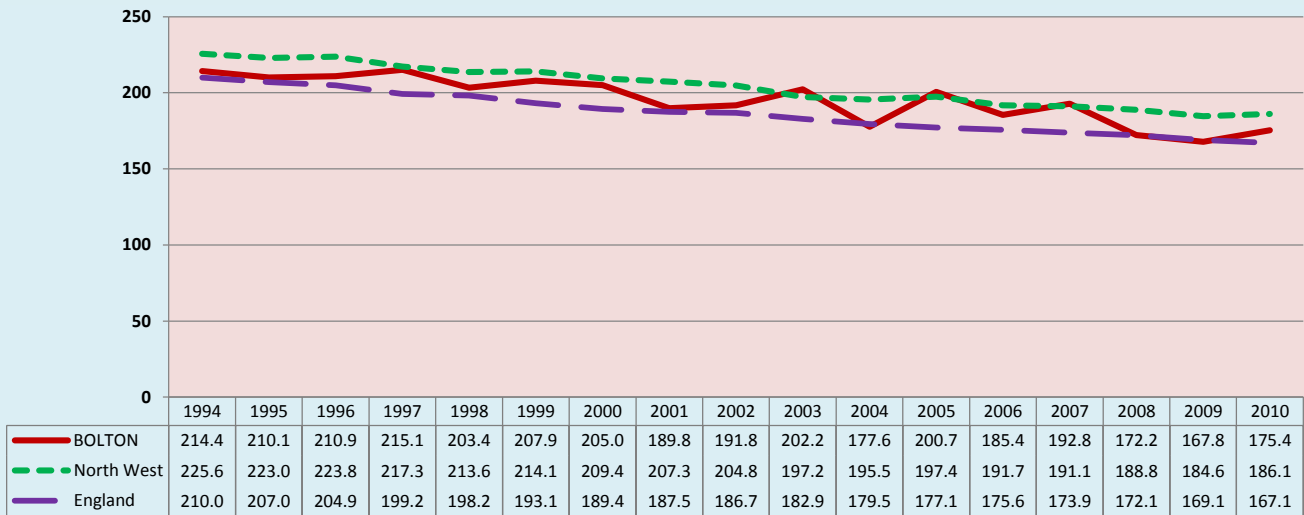
1. CURRENT PICTURE

Standardised mortality ratio (SMR)/Directly standardised rate (DSR)

	SMR		DSR	
	Persons		Persons	
BOLTON	100		171.8	
North West	110		186.5	
England	100		169.4	
	Male	Female	Male	Female
BOLTON	104	97	209.3	146.4
North West	110	109	222.5	160.4
England	100	100	201.5	146.0

2. HISTORICAL TREND

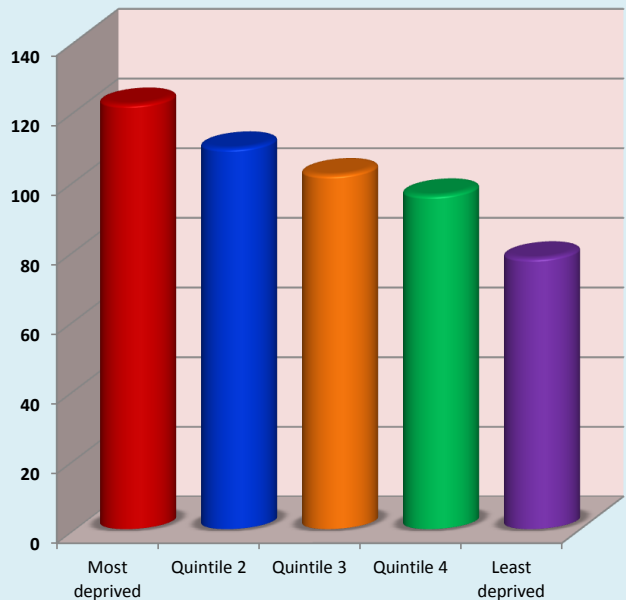
Directly Standardised Rate (DSR): Persons



3. DEPRIVATION GROUPS

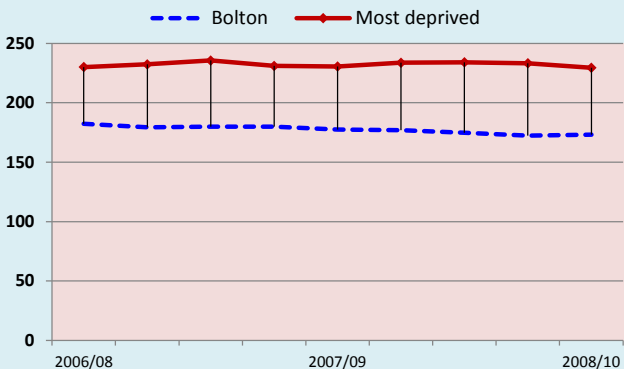
Standardised mortality ratio (SMR): Persons

Bolton = 100



4. MOST DEPRIVED GROUP HISTORICAL TREND

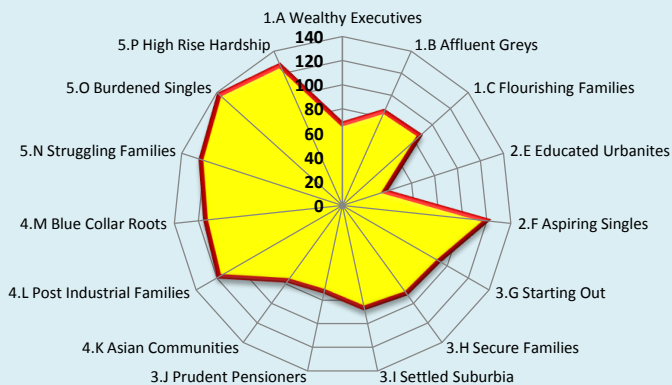
Directly Standardised Rate (DSR): Persons



5. ACORN* GEODEMOGRAPHIC GROUP

Standardised mortality ratio (SMR): Persons

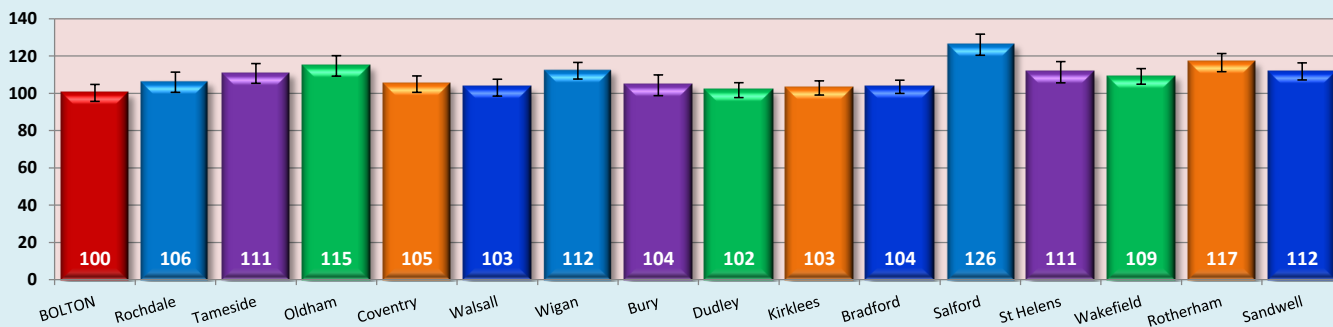
Bolton = 100



6. STATISTICAL PEERS CURRENT POSITION

Standardised mortality ratio (SMR): Persons

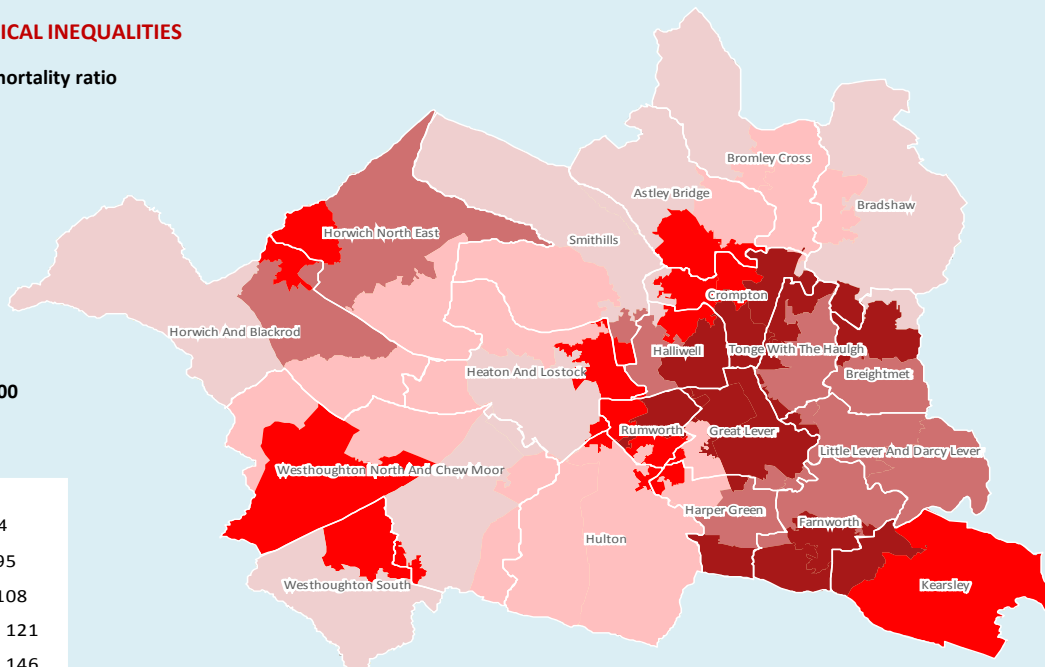
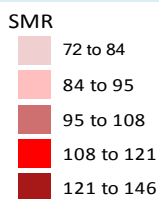
England = 100



7. GEOGRAPHICAL INEQUALITIES

Standardised mortality ratio

England = 100



© Crown copyright and/or database right 2009. All rights reserved. Licence number 100026920
InSite © CACI Ltd, 2012 All rights reserved

8. NOTES

- Source: National Centre for Health Outcomes Development (NCHOD); 2008/10
- Source: National Centre for Health Outcomes Development (NCHOD); 1994-2010
- Source: Public Health Mortality File, Office of National Statistics (ONS); 2005/09
- Source: Public Health Mortality File, Office of National Statistics (ONS); 2006/10
- Source: National Centre for Health Outcomes Development (NCHOD); 2008/10
- Source: Association of Public Health Observatories (APHO); 2006-2010

Joint Strategic Needs Assessment

NHS Bolton

Bolton Vision