

# Mortality: Colorectal cancer

## HEADLINES

- For both sexes mortality from colorectal cancer is currently lower in Bolton than it is regionally and nationally;
- There is little difference between quintiles, but there is evidence of a growing inequality gap between the most deprived quintile and Bolton;
- The geographical variation of mortality is more evenly distributed across Bolton than many other causes of death (which tend to cluster in the more deprived areas around the Town Centre);
- In some parts of Bolton mortality is presently 80% higher than the national average;
- Bolton has a lower mortality rate than average for its peer group.

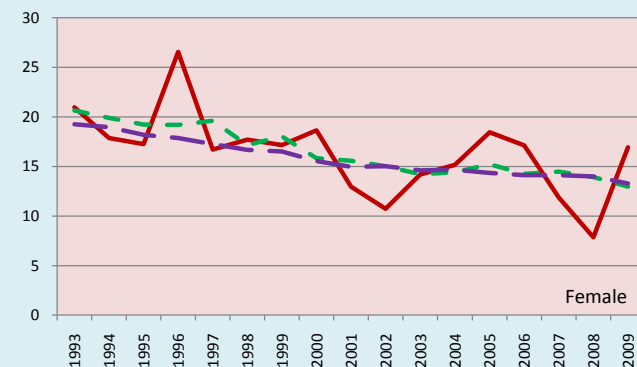
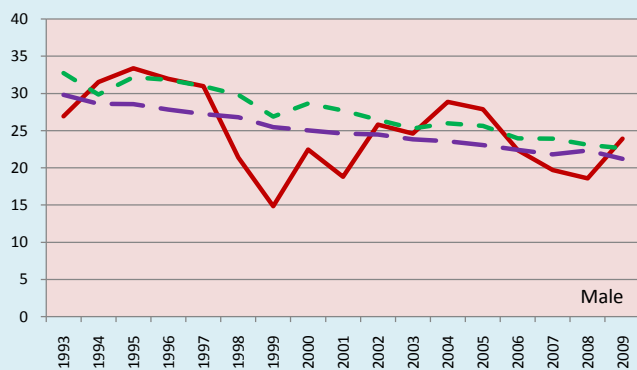
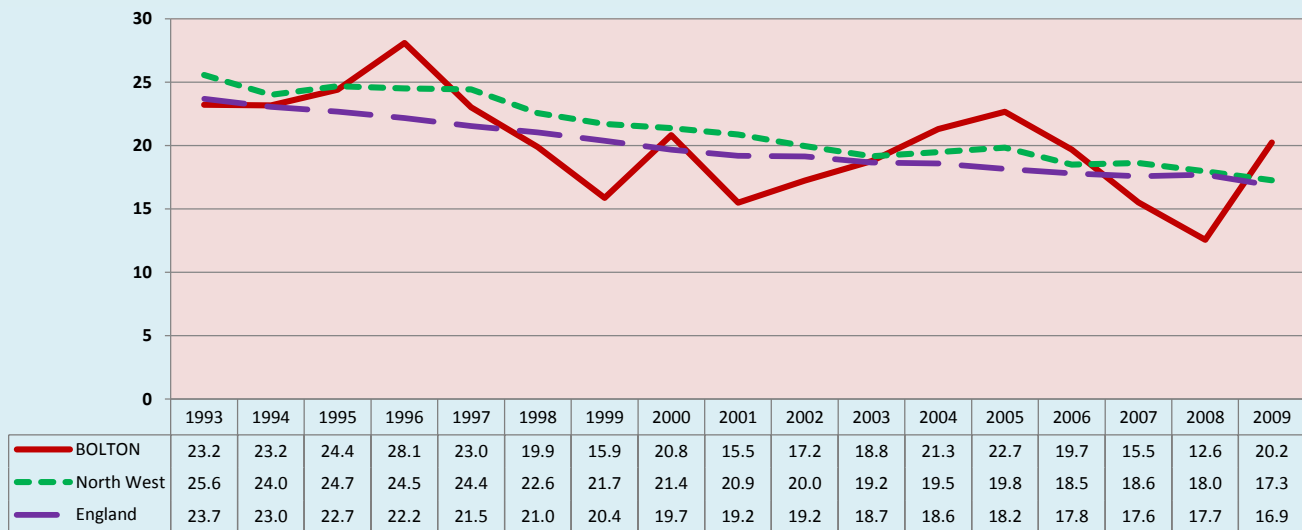
## 1. CURRENT PICTURE

Standardised mortality ratio (SMR)/Directly standardised rate (DSR)

	SMR		DSR	
	Persons	Persons	Persons	Persons
BOLTON	94	16.1		
North West	103	18.0		
England	100	17.4		
	Male	Female	Male	Female
BOLTON	98	89	20.7	12.2
North West	107	100	23.2	13.8
England	100	100	21.8	13.8

## 2. HISTORICAL TREND

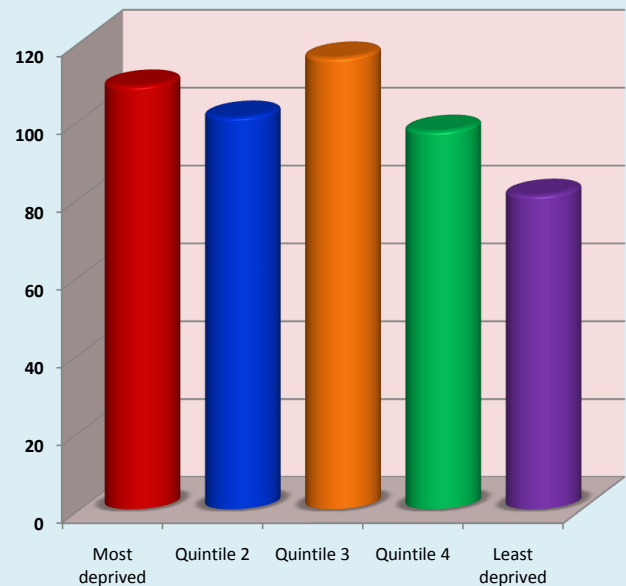
Directly Standardised Rate (DSR): Persons



## 3. DEPRIVATION GROUPS

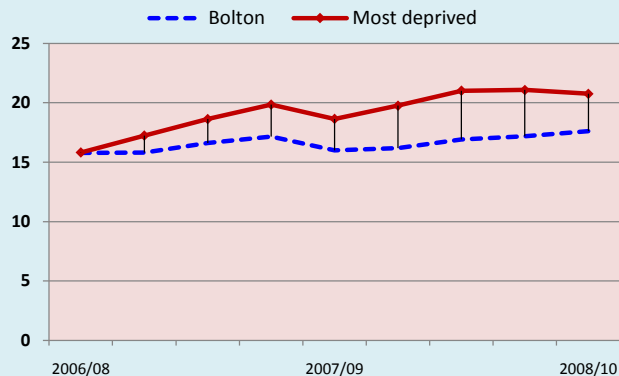
Standardised mortality ratio (SMR): Persons

Bolton = 100



#### 4. MOST DEPRIVED GROUP HISTORICAL TREND

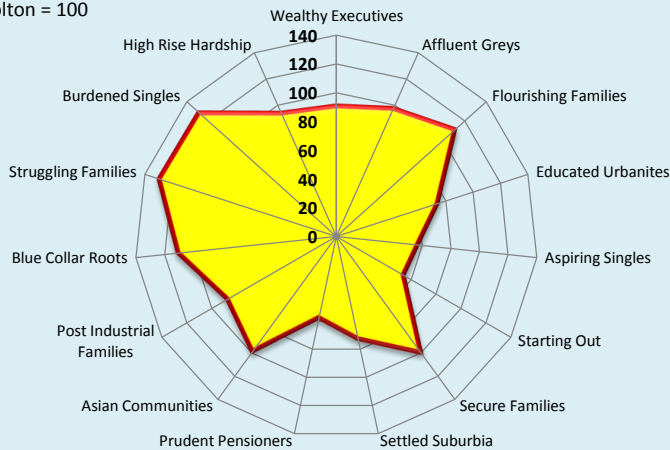
Directly Standardised Rate (DSR): Persons



#### 5. ACORN\* GEODEMOGRAPHIC GROUP

Standardised mortality ratio (SMR): Persons

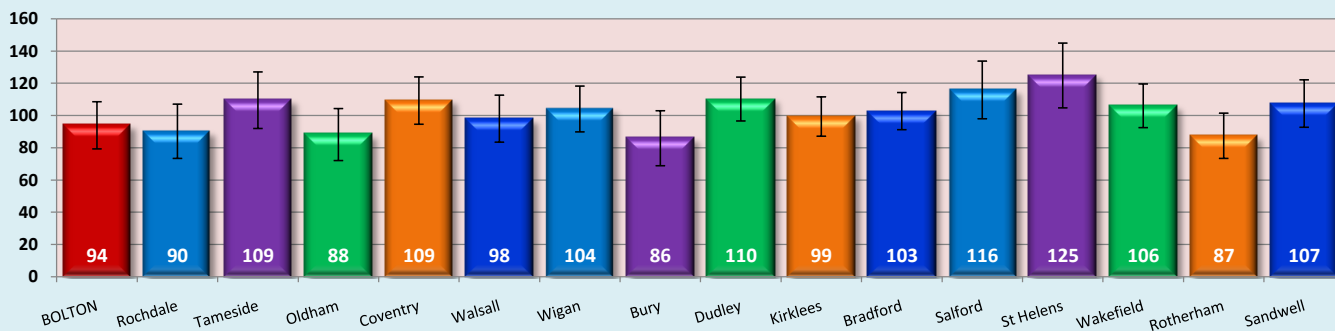
Bolton = 100



#### 6. STATISTICAL PEERS CURRENT POSITION

Standardised mortality ratio (SMR): Persons

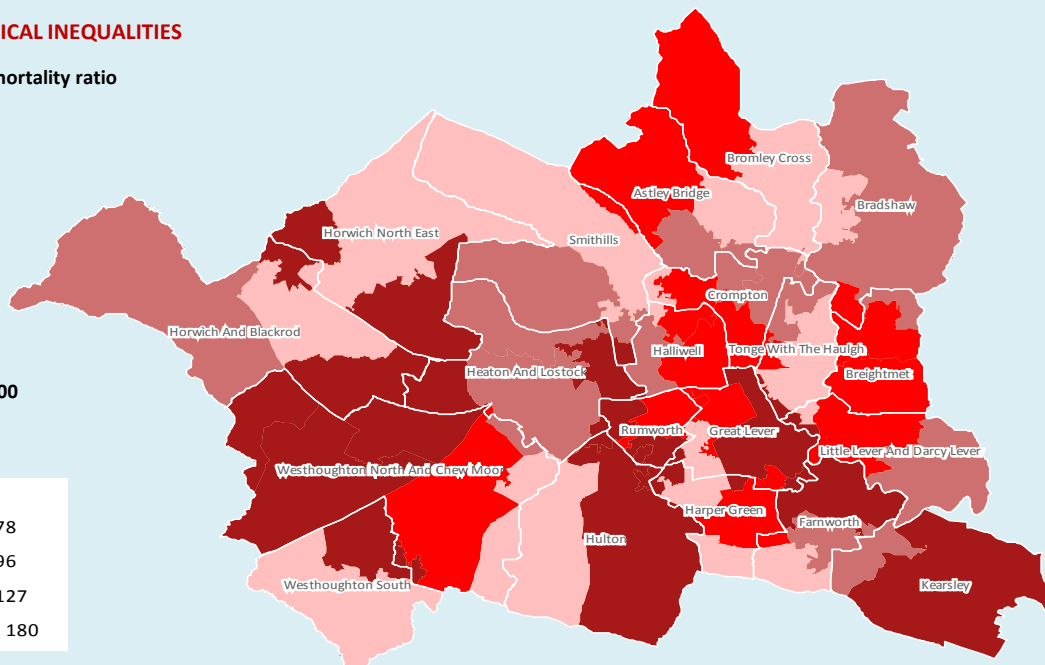
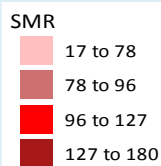
England = 100



#### 7. GEOGRAPHICAL INEQUALITIES

Standardised mortality ratio

England = 100



© Crown copyright and/or database right 2009. All rights reserved. Licence number 100026920  
InSite © CACI Ltd, 2011 All rights reserved

#### 8. NOTES

- Source: National Centre for Health Outcomes Development (NCHOD); 2007/09
- Source: National Centre for Health Outcomes Development (NCHOD); 1993-2009
- Source: Public Health Mortality File, Office of National Statistics (ONS); 2005/09
- Source: Public Health Mortality File, Office of National Statistics(ONS); 2006/10
- Source: National Centre for Health Outcomes Development (NCHOD); 2007/09
- Source: Association of Public Health Observatories (APHO); 2005/09

#### Joint Strategic Needs Assessment

