

Mortality: Lung cancer

HEADLINES

- Lung cancer mortality in Bolton is 10% higher than England for men and 36% higher for women;
- The female trend, whilst lower than the male, has been static historically, with small increases in more recent years locally;
- There is a clear gradient across quintiles with the most deprived group having the highest mortality rate, and this inequality gap shows no change over time;
- In some parts of Bolton mortality is more than 50% higher than the national average, with the highest rates seen in the more deprived areas around the Town Centre;
- Bolton is average for its peer group.

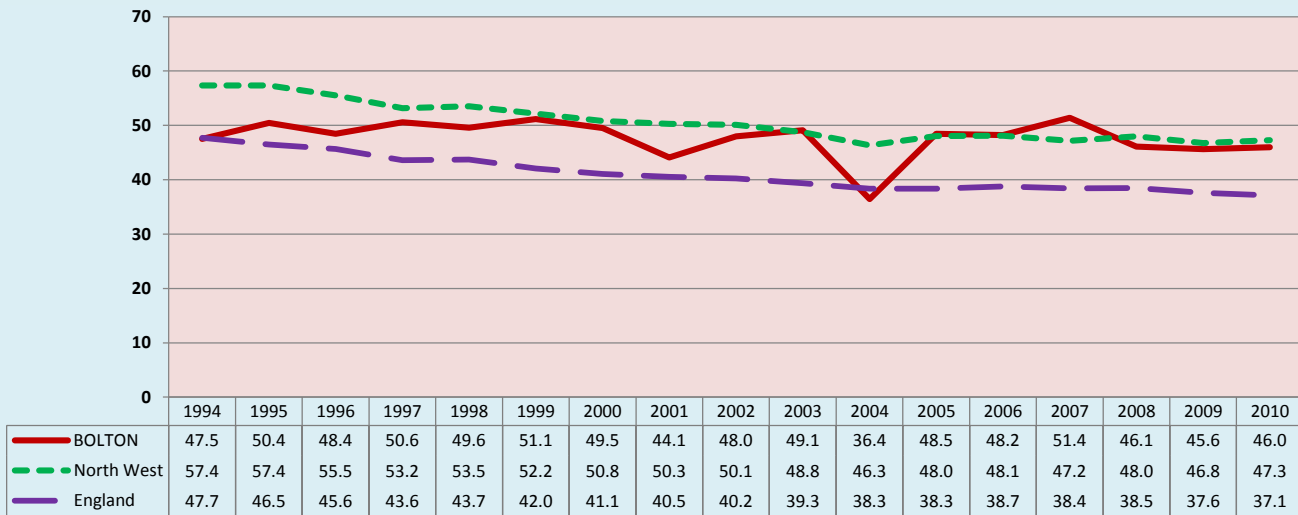
1. CURRENT PICTURE

Standardised mortality ratio (SMR)/Directly standardised rate (DSR)

	SMR		DSR	
	Persons		Persons	
BOLTON	121		45.9	
North West	126		47.3	
England	100		37.7	
	Male	Female	Male	Female
BOLTON	110	136	52.5	41.6
North West	121	131	57.9	39.3
England	100	100	47.7	29.9

2. HISTORICAL TREND

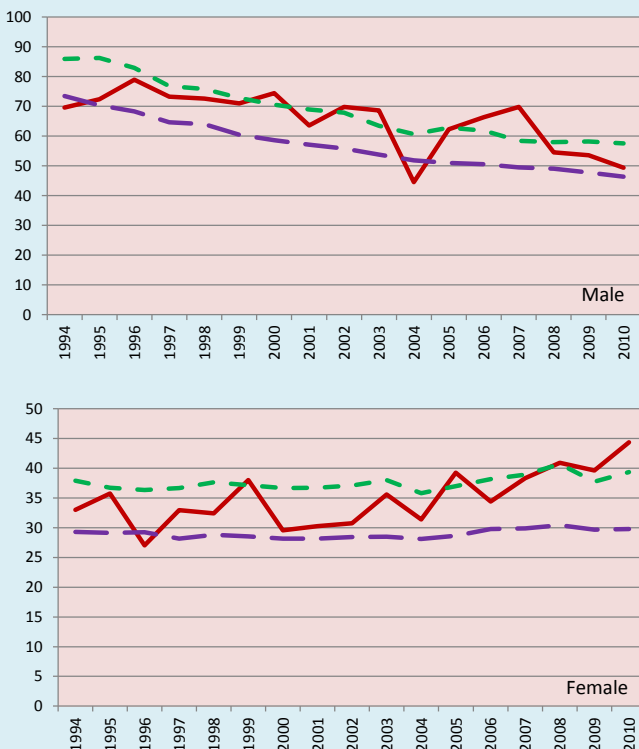
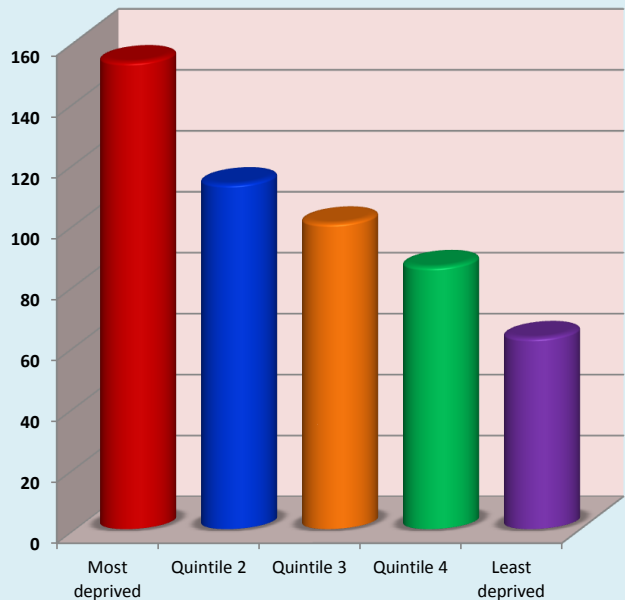
Directly Standardised Rate (DSR): Persons



3. DEPRIVATION GROUPS

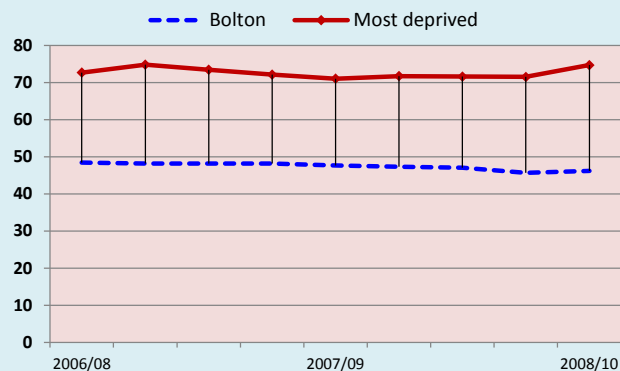
Standardised mortality ratio (SMR): Persons

Bolton = 100



4. MOST DEPRIVED GROUP HISTORICAL TREND

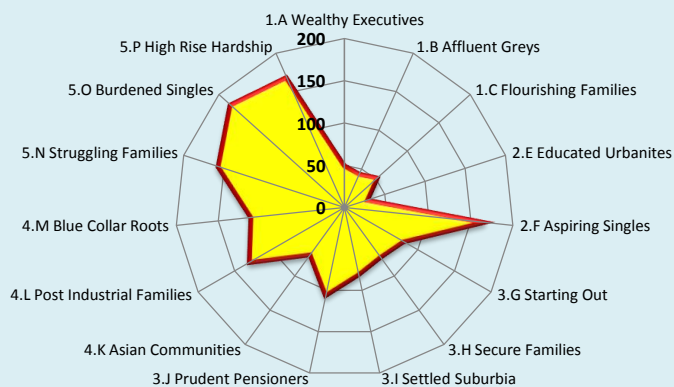
Directly Standardised Rate (DSR): Persons



5. ACORN* GEODEMOGRAPHIC GROUP

Standardised mortality ratio (SMR): Persons

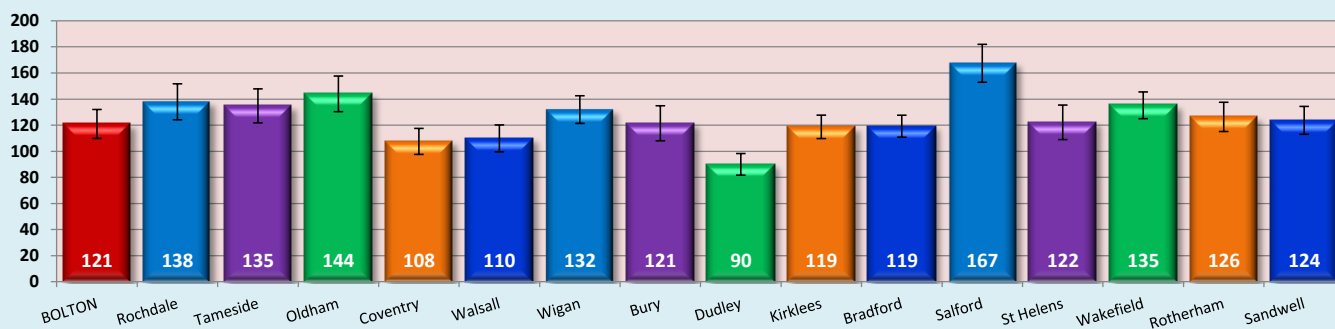
Bolton = 100



6. STATISTICAL PEERS CURRENT POSITION

Standardised mortality ratio (SMR): Persons

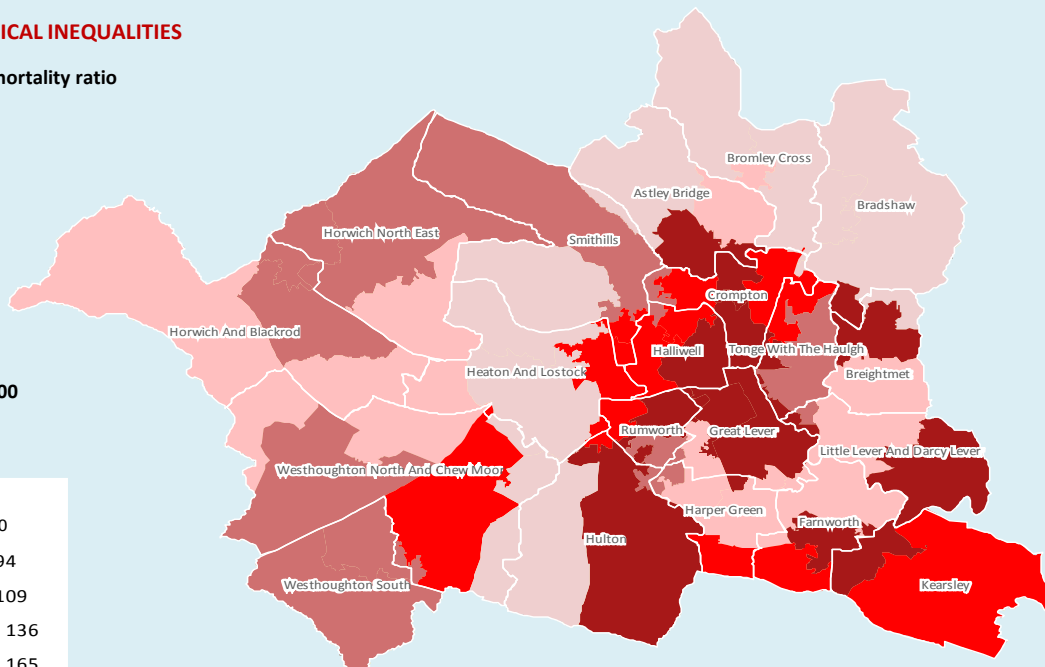
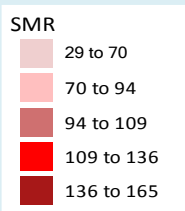
England = 100



7. GEOGRAPHICAL INEQUALITIES

Standardised mortality ratio

England = 100



© Crown copyright and/or database right 2009. All rights reserved. Licence number 100026920
InSite © CACI Ltd, 2012 All rights reserved

8. NOTES

- Source: National Centre for Health Outcomes Development (NCHOD); 2008/10
- Source: National Centre for Health Outcomes Development (NCHOD); 1994-2010
- Source: Public Health Mortality File, Office of National Statistics (ONS); 2005/09
- Source: Public Health Mortality File, Office of National Statistics (ONS); 2006/10
- Source: National Centre for Health Outcomes Development (NCHOD); 2008/10
- Source: Association of Public Health Observatories (APHO); 2006-2010

Joint Strategic Needs Assessment

