

Premature (<75) mortality: Cancer

HEADLINES

- Premature cancer mortality in Bolton is currently lower than is average for the North West region whilst being slightly higher than England;
- Cancer mortality is reducing locally, regionally, and nationally for both sexes;
- In some parts of Bolton premature mortality from cancer is over 50% higher than the national average;
- Mortality is greatest in the more deprived areas around the Town Centre and the inequality gap between Bolton and the most deprived quintile appears to be slowly widening;
- Bolton is around average for its peer group.

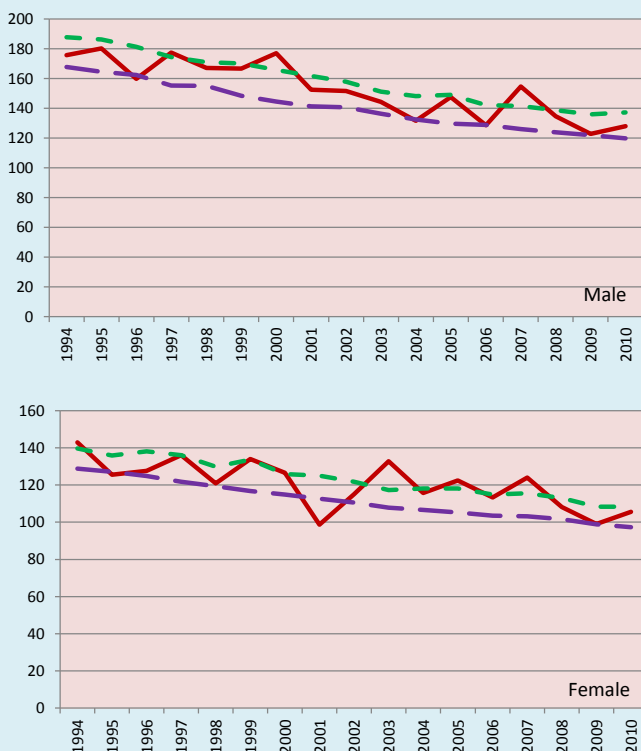
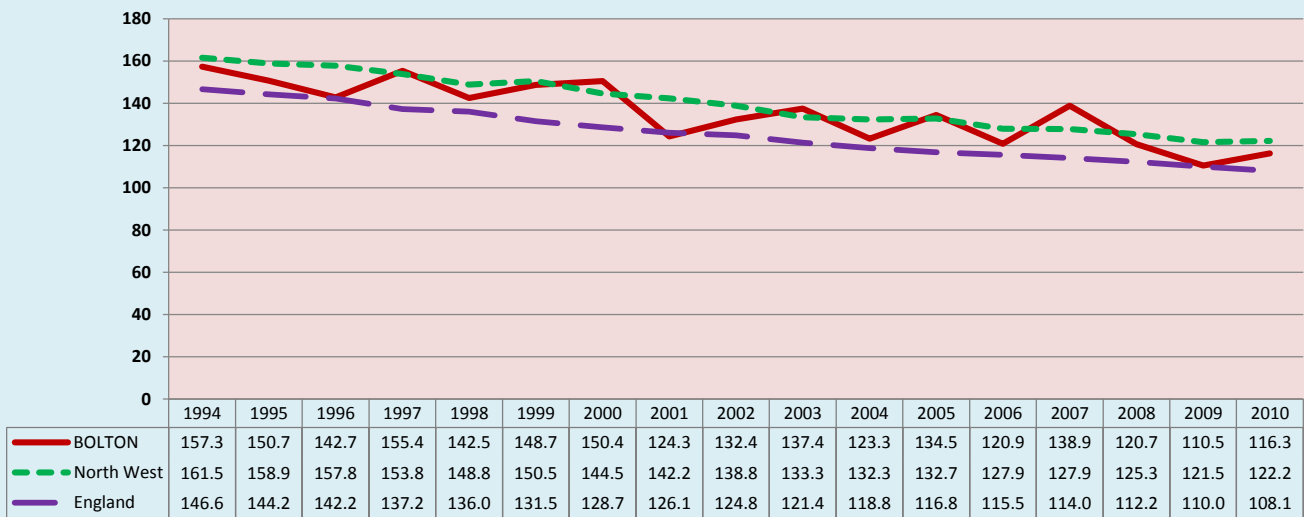
1. CURRENT PICTURE

Standardised mortality ratio (SMR)/Directly standardised rate (DSR)

	SMR		DSR	
	Persons		Persons	
BOLTON	105		149.6	
North West	112		156.9	
England	100		141.2	
	Male	Female	Male	Female
BOLTON	105	104	172.5	129.7
North West	113	111	180.7	136.7
England	100	100	160.8	124.5

2. HISTORICAL TREND

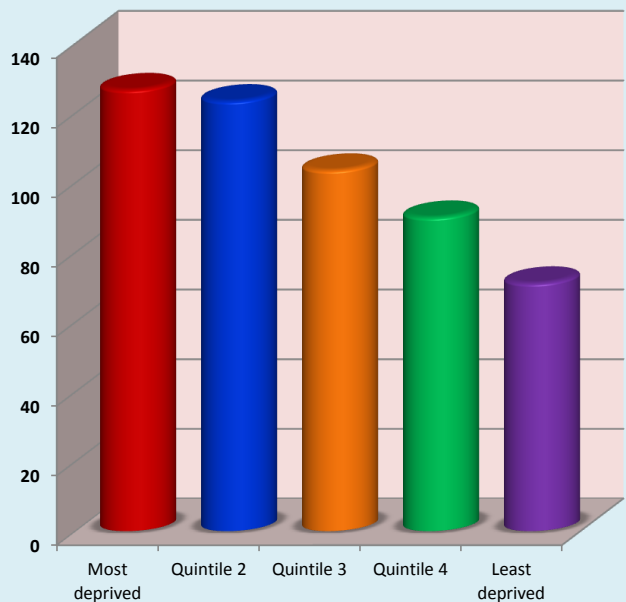
Directly Standardised Rate (DSR): Persons



3. DEPRIVATION GROUPS

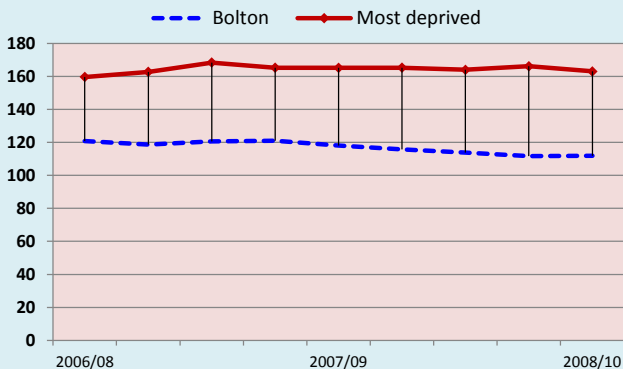
Standardised mortality ratio (SMR): Persons

Bolton = 100



4. MOST DEPRIVED GROUP HISTORICAL TREND

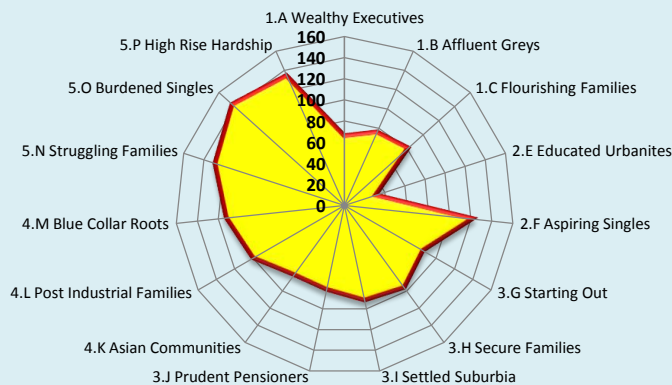
Directly Standardised Rate (DSR): Persons



5. ACORN* GEODEMOGRAPHIC GROUP

Standardised mortality ratio (SMR): Persons

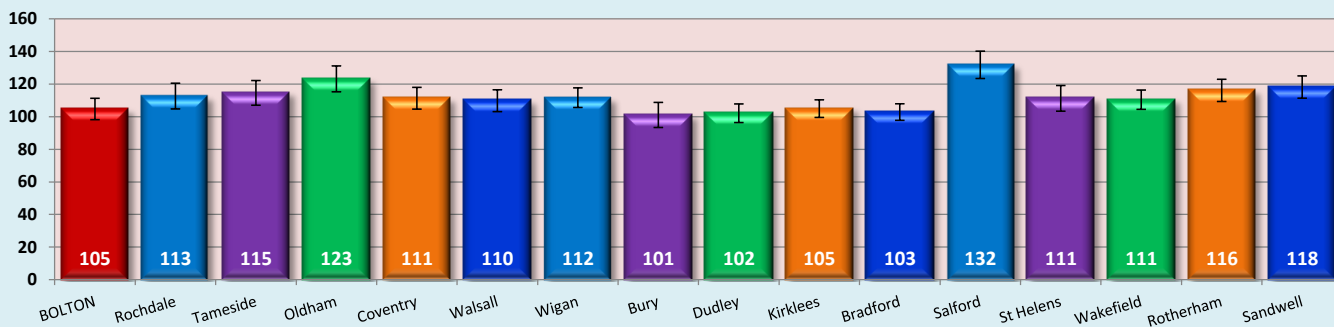
Bolton = 100



6. STATISTICAL PEERS CURRENT POSITION

Standardised mortality ratio (SMR): Persons

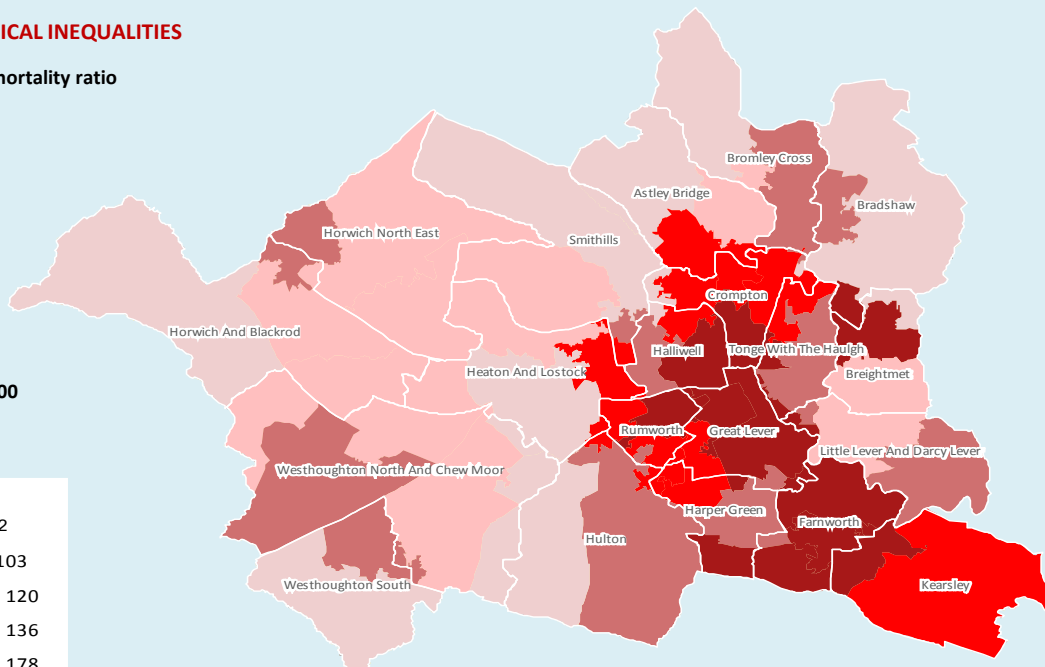
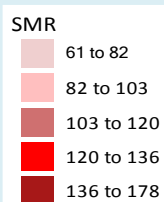
England = 100



7. GEOGRAPHICAL INEQUALITIES

Standardised mortality ratio

England = 100



© Crown copyright and/or database right 2009. All rights reserved. Licence number 100026920
InSite © CACI Ltd, 2012 All rights reserved

8. NOTES

- Source: National Centre for Health Outcomes Development (NCHOD); 2008/10
- Source: National Centre for Health Outcomes Development (NCHOD); 1994-2010
- Source: Public Health Mortality File, Office of National Statistics (ONS); 2005/09
- Source: Public Health Mortality File, Office of National Statistics (ONS); 2006/10
- Source: National Centre for Health Outcomes Development (NCHOD); 2008/10
- Source: Association of Public Health Observatories (APHO); 2006-2010

Joint Strategic Needs Assessment

NHS Bolton

Bolton Vision