

# Premature (<75) mortality: Lung cancer

## HEADLINES

- Premature lung cancer mortality in Bolton is 30% higher than England for men and 50% higher for women;
- The female trend, whilst lower than the male, has been static historically, with small increases in more recent years locally;
- There is a clear gradient across quintiles with the most deprived group having the highest mortality rate, and this inequality gap shows no consistent reduction over time;
- In some parts of Bolton mortality is more than double the national average, with the highest rates seen in the more deprived areas around the Town Centre;
- Bolton is above average for its peer group.

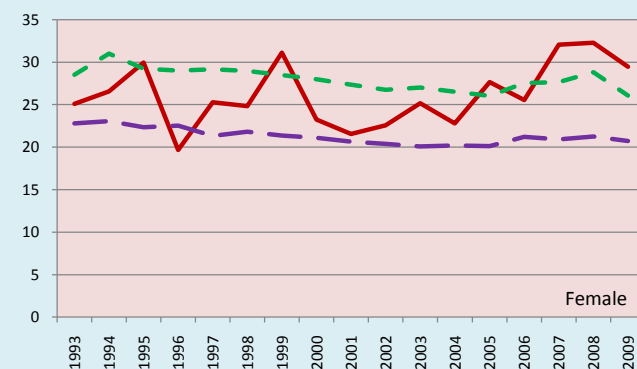
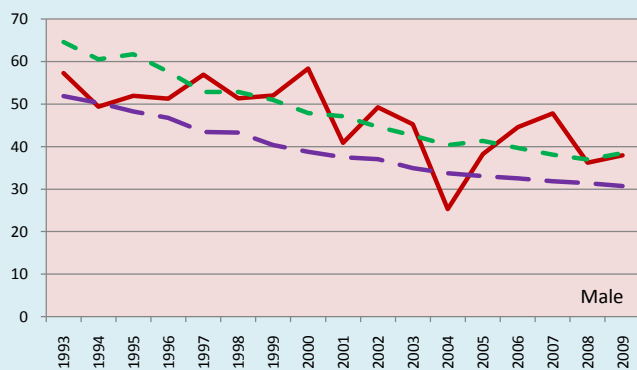
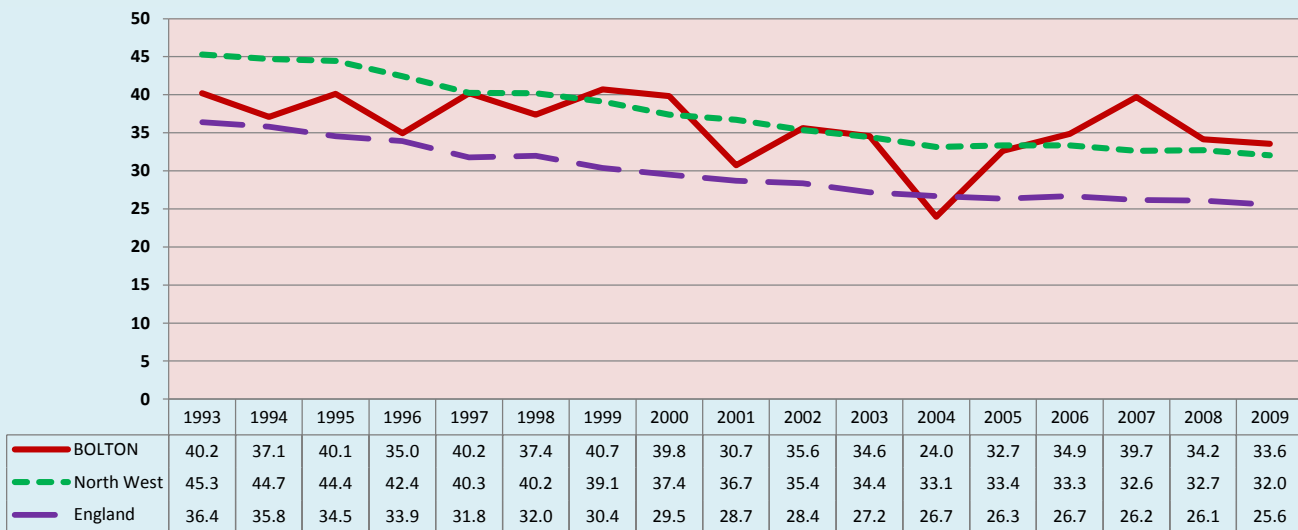
## 1. CURRENT PICTURE

Standardised mortality ratio (SMR)/Directly standardised rate (DSR)

	SMR		DSR	
	Persons		Persons	
BOLTON	138		35.8	
North West	126		32.5	
England	100		26.0	
	Male	Female	Male	Female
BOLTON	130	150	40.7	31.3
North West	121	132	37.8	27.5
England	100	100	31.3	21.0

## 2. HISTORICAL TREND

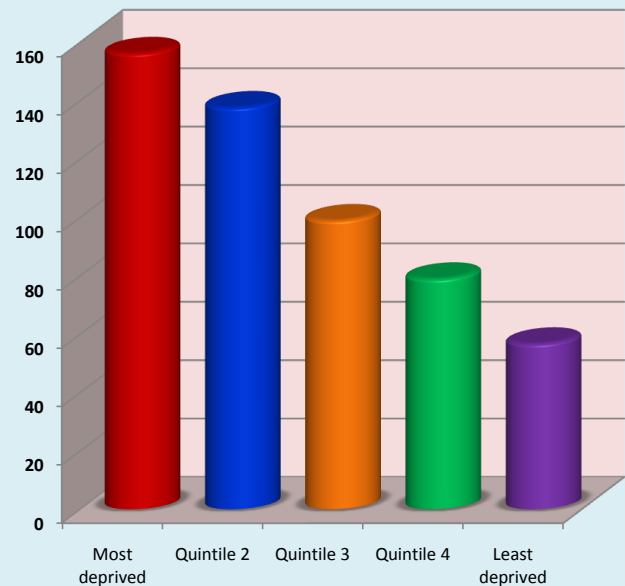
Directly Standardised Rate (DSR): Persons



## 3. DEPRIVATION GROUPS

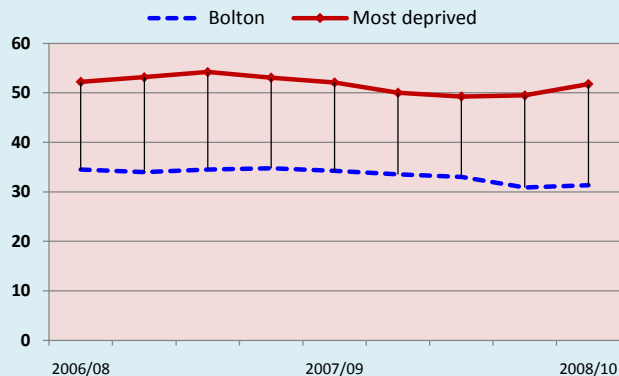
Standardised mortality ratio (SMR): Persons

Bolton = 100



#### 4. MOST DEPRIVED GROUP HISTORICAL TREND

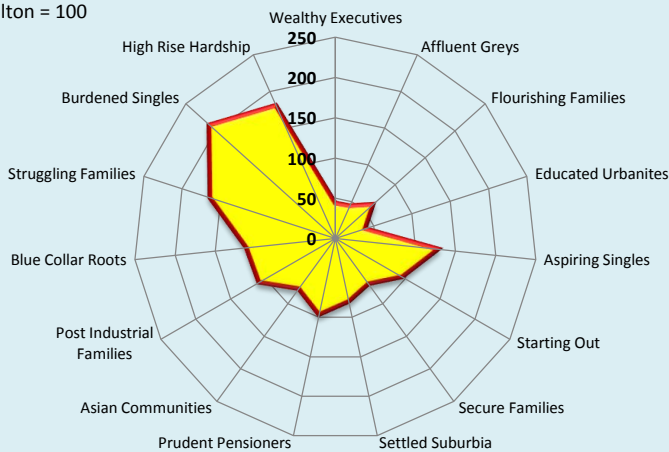
Directly Standardised Rate (DSR): Persons



#### 5. ACORN\* GEODEMOGRAPHIC GROUP

Standardised mortality ratio (SMR): Persons

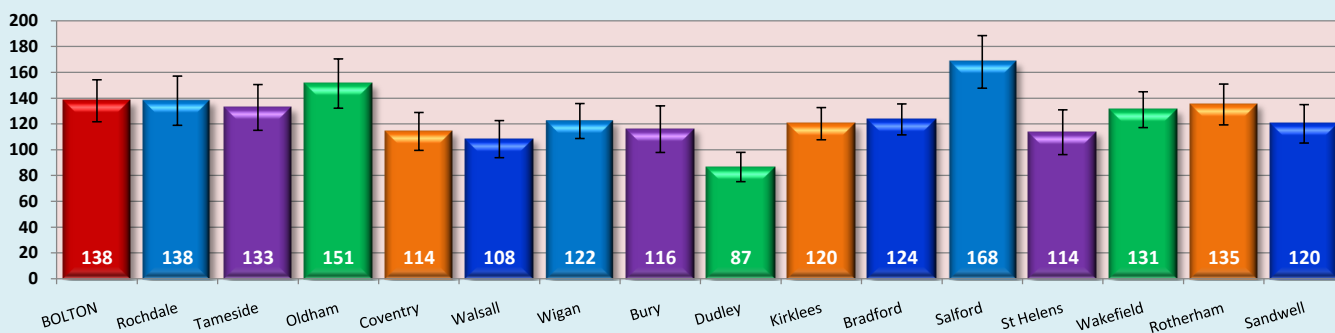
Bolton = 100



#### 6. STATISTICAL PEERS CURRENT POSITION

Standardised mortality ratio (SMR): Persons

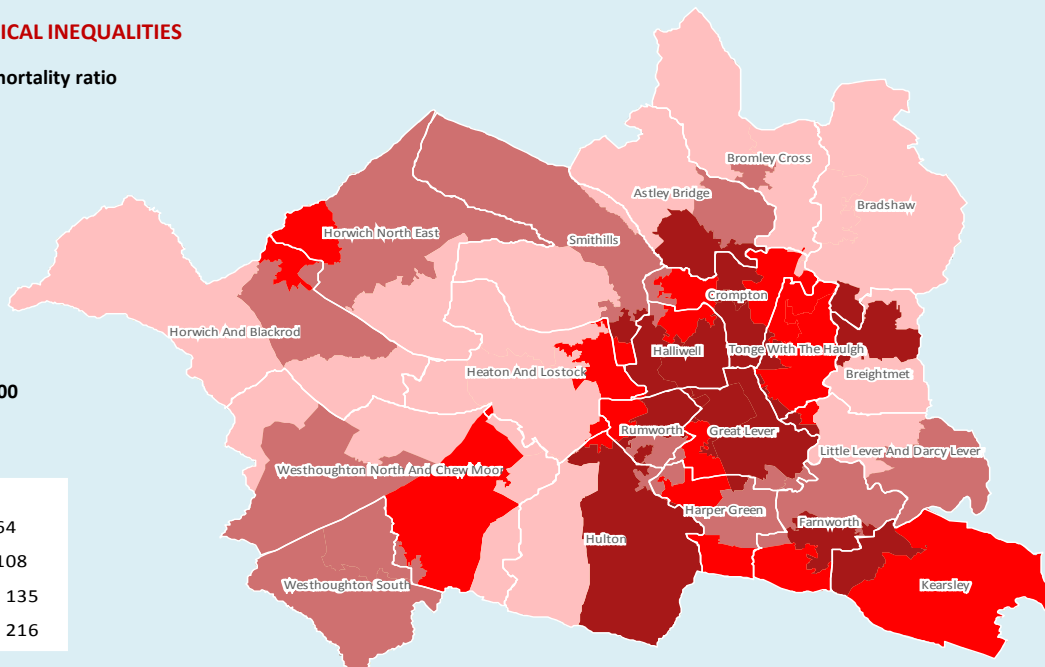
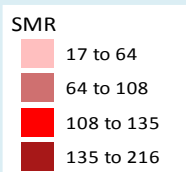
England = 100



#### 7. GEOGRAPHICAL INEQUALITIES

Standardised mortality ratio

England = 100



© Crown copyright and/or database right 2009. All rights reserved. Licence number 100026920  
InSite © CACI Ltd, 2011 All rights reserved

#### 8. NOTES

- Source: National Centre for Health Outcomes Development (NCHOD); 2007/09
- Source: National Centre for Health Outcomes Development (NCHOD); 1993-2009
- Source: Public Health Mortality File, Office of National Statistics (ONS); 2005/09
- Source: Public Health Mortality File, Office of National Statistics (ONS); 2006/10
- Source: National Centre for Health Outcomes Development (NCHOD); 2007/09
- Source: Association of Public Health Observatories (APHO); 2005/09

#### Joint Strategic Needs Assessment

NHS Bolton

Bolton Vision