

Mortality: Stroke

HEADLINES

- Mortality from stroke in Bolton is currently higher than both the regional and national averages - almost 40% higher than England for Bolton men and 20% higher for Bolton women;
- Mortality from stroke is reducing locally, regionally, and nationally for both sexes;
- In some parts of Bolton the mortality rate from stroke is more than double that seen nationally;
- Mortality is greatest in the more deprived areas around the Town Centre, but the distribution does not match deprivation as closely as CVD as a whole and the inequality gap shows minor reductions;
- Bolton is above average for its peer group.

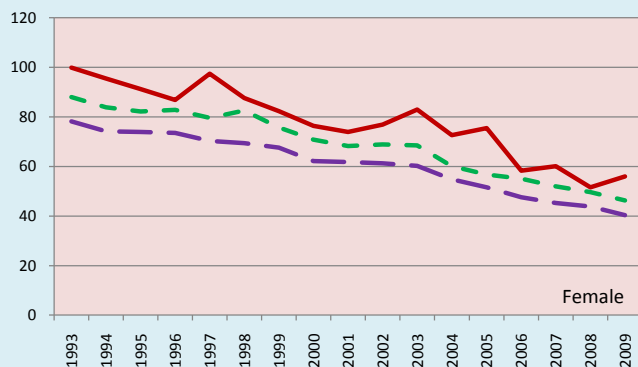
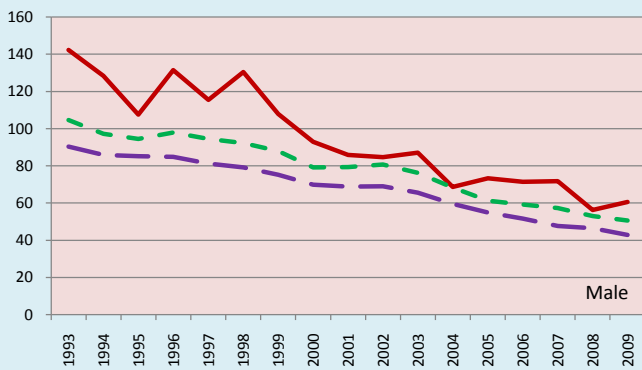
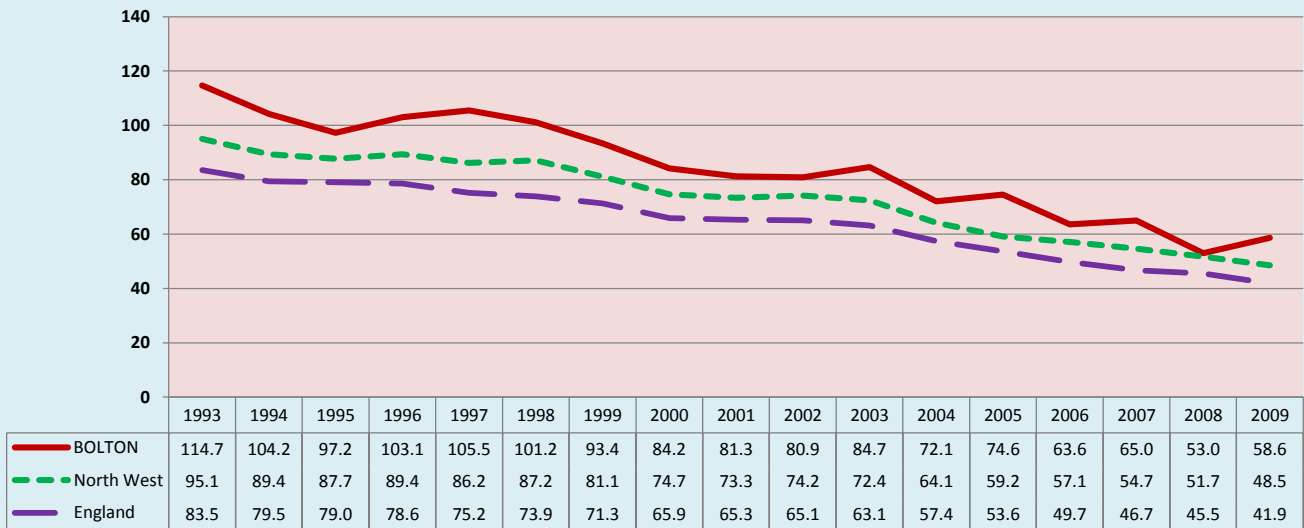
1. CURRENT PICTURE

Standardised mortality ratio (SMR)/Directly standardised rate (DSR)

	SMR		DSR	
	Persons	Persons	Persons	Persons
BOLTON	129		58.9	
North West	114		51.6	
England	100		44.7	
	Male	Female	Male	Female
BOLTON	139	123	62.9	55.9
North West	117	112	53.6	49.3
England	100	100	45.7	43.1

2. HISTORICAL TREND

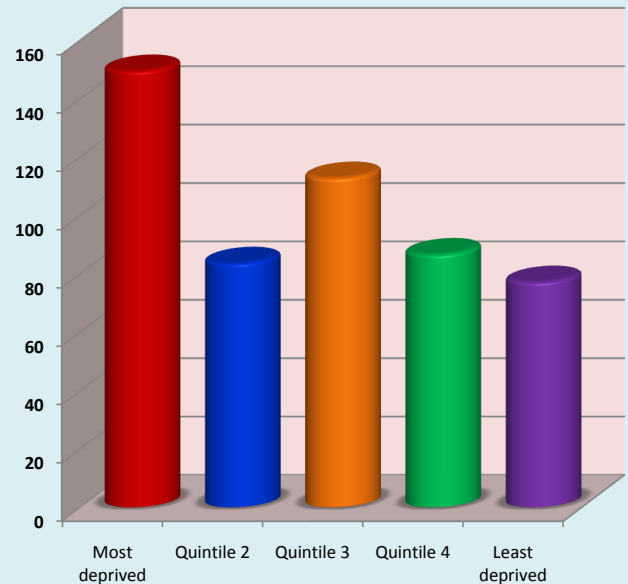
Directly Standardised Rate (DSR): Persons



3. DEPRIVATION GROUPS

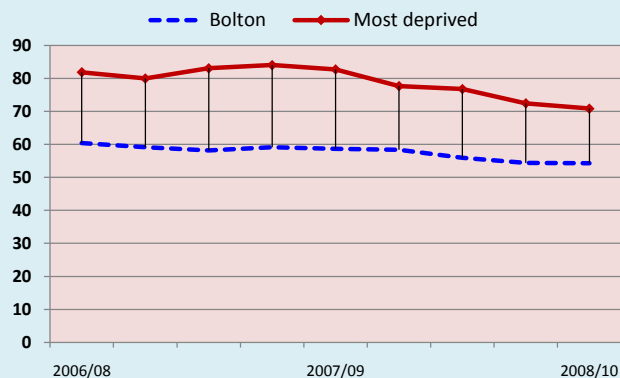
Standardised mortality ratio (SMR): Persons

Bolton = 100



4. MOST DEPRIVED GROUP HISTORICAL TREND

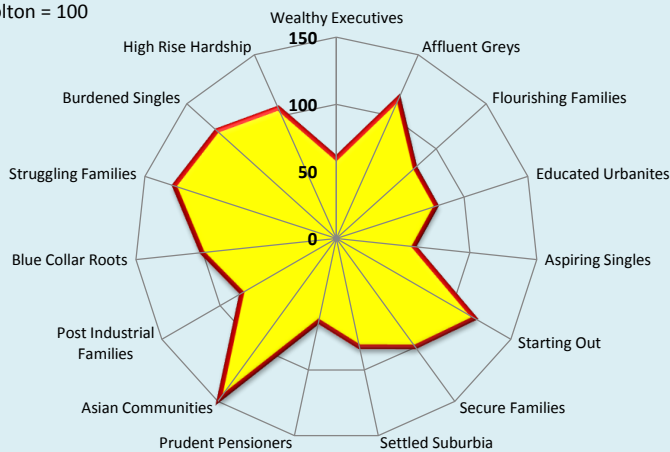
Directly Standardised Rate (DSR): Persons



5. ACORN* GEODEMOGRAPHIC GROUP

Standardised mortality ratio (SMR): Persons

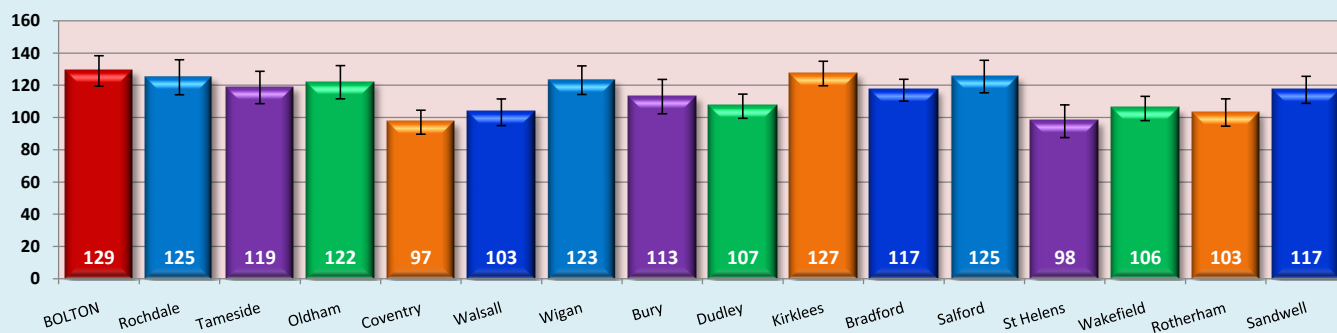
Bolton = 100



6. STATISTICAL PEERS CURRENT POSITION

Standardised mortality ratio (SMR): Persons

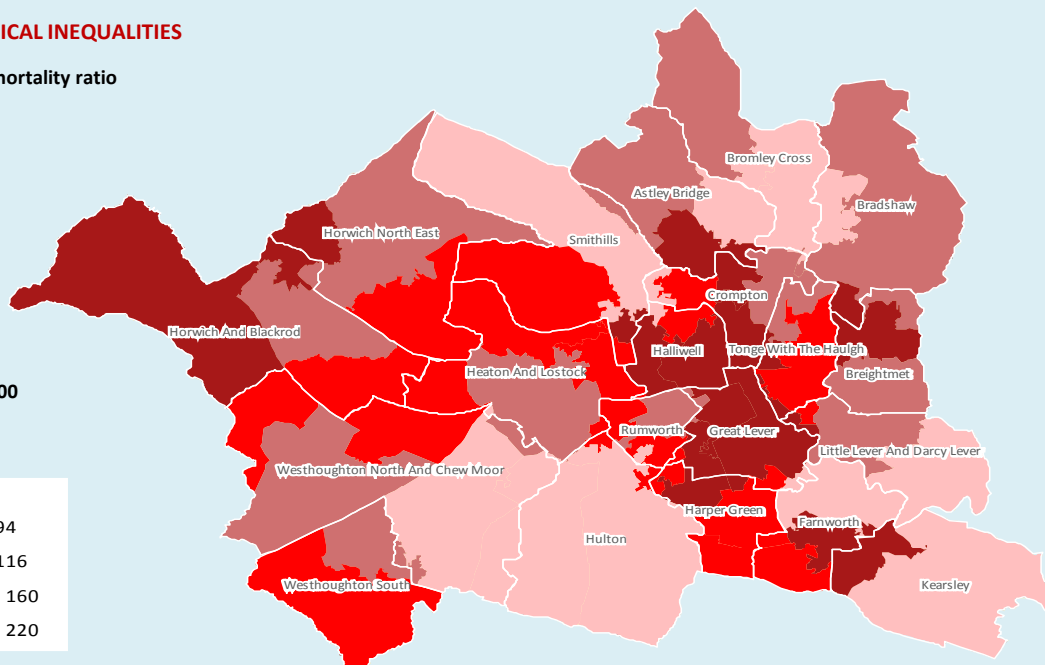
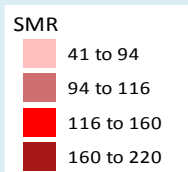
England = 100



7. GEOGRAPHICAL INEQUALITIES

Standardised mortality ratio

England = 100



© Crown copyright and/or database right 2009. All rights reserved. Licence number 100026920
InSite © CACI Ltd, 2011 All rights reserved

8. NOTES

- Source: National Centre for Health Outcomes Development (NCHOD); 2007/09
- Source: National Centre for Health Outcomes Development (NCHOD); 1993-2009
- Source: Public Health Mortality File, Office of National Statistics (ONS); 2005/09
- Source: Public Health Mortality File, Office of National Statistics(ONS); 2006/10
- Source: National Centre for Health Outcomes Development (NCHOD); 2007/09
- Source: Association of Public Health Observatories (APHO); 2005/09

Joint Strategic Needs Assessment

