

Mortality: Suicide and injury undetermined

HEADLINES

- Suicide in Bolton is significantly higher than both the national and regional averages;
- The female suicide rate, whilst lower than the male, is currently much higher in Bolton than the regional and national picture;
- The suicide rate in Bolton is significantly higher than many of its statistical peers;
- Suicide in Bolton is significantly higher in the most deprived fifth of the population;
- The majority of suicides in Bolton occur in the White British ethnic group, which is largely representative of Bolton demography;
- For both genders, the greater proportion of suicides occur in the 18-44 age group.

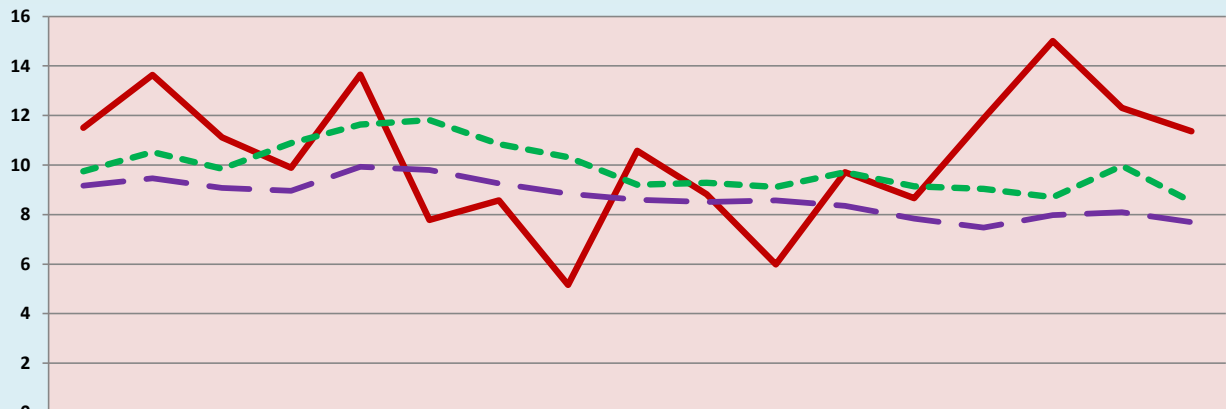
1. CURRENT PICTURE

Standardised mortality ratio (SMR)/Directly standardised rate (DSR)

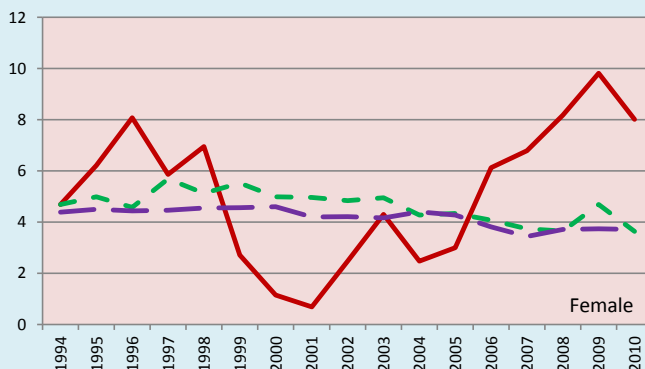
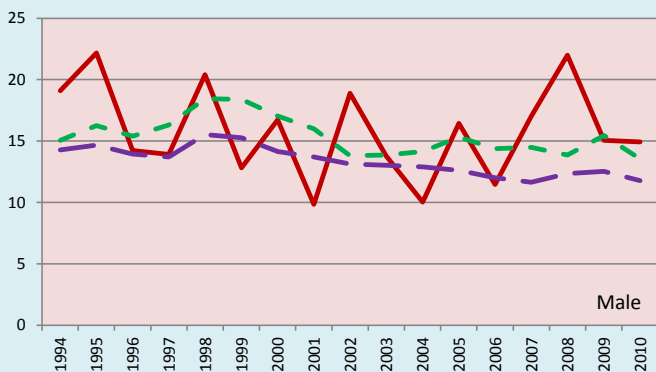
	SMR		DSR	
	Persons		Persons	
BOLTON	159		12.9	
North West	114		9.1	
England	100		7.9	
	Male	Female	Male	Female
BOLTON	140	217	17.3	8.7
North West	116	106	14.3	4.0
England	100	100	12.2	3.7

2. HISTORICAL TREND

Directly Standardised Rate (DSR): Persons



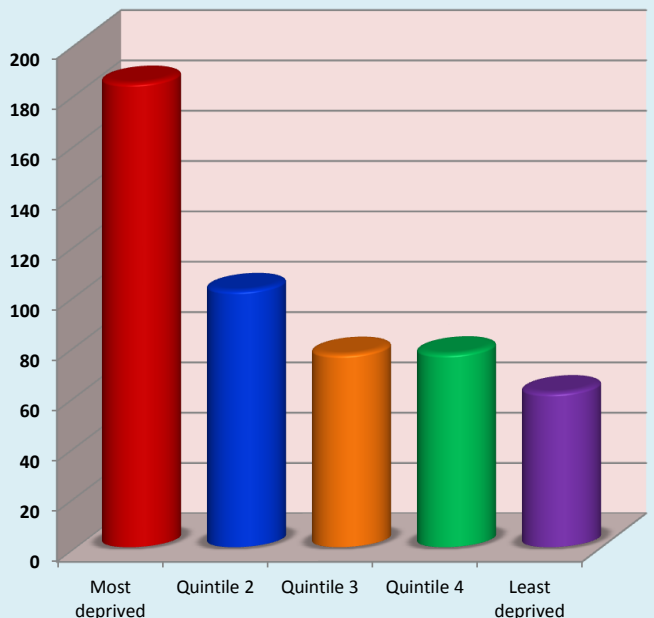
	1994	1995	1996	1997	1998	1999	2000	2001	2002	2003	2004	2005	2006	2007	2008	2009	2010
BOLTON	11.5	13.6	11.1	9.9	13.7	7.8	8.6	5.2	10.6	8.8	6.0	9.7	8.7	11.9	15.0	12.3	11.4
North West	9.8	10.5	9.9	10.9	11.6	11.8	10.9	10.3	9.2	9.3	9.1	9.7	9.1	9.0	8.7	10.0	8.5
England	9.2	9.5	9.1	9.0	9.9	9.8	9.3	8.8	8.6	8.5	8.6	8.4	7.8	7.5	8.0	8.1	7.7



3. DEPRIVATION GROUPS

Standardised mortality ratio (SMR): Persons

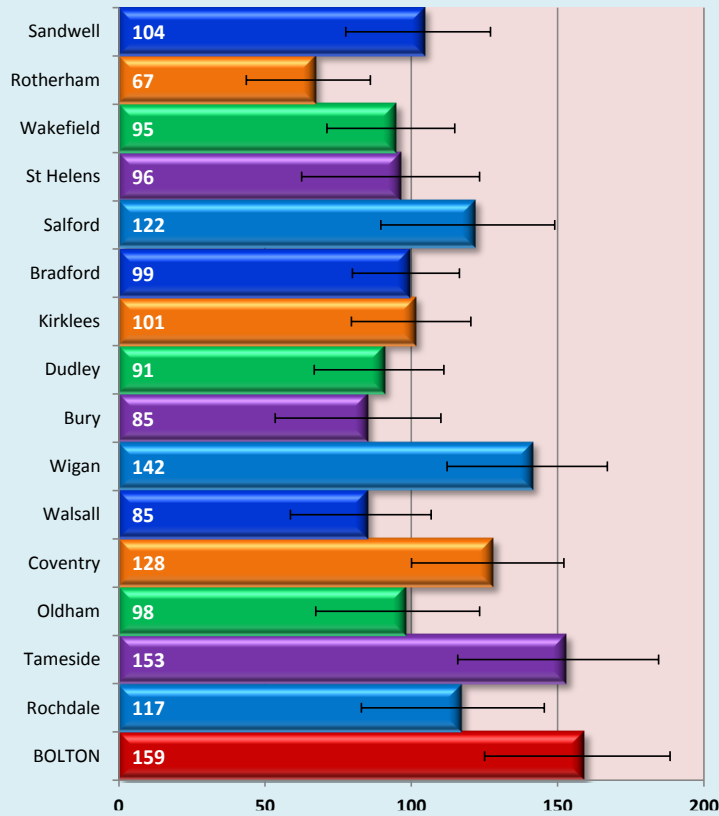
Bolton = 100



4. STATISTICAL PEERS CURRENT POSITION

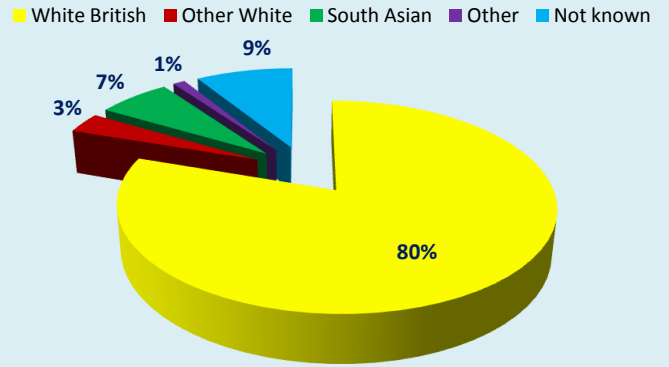
Standardised mortality ratio (SMR): Persons

England = 100



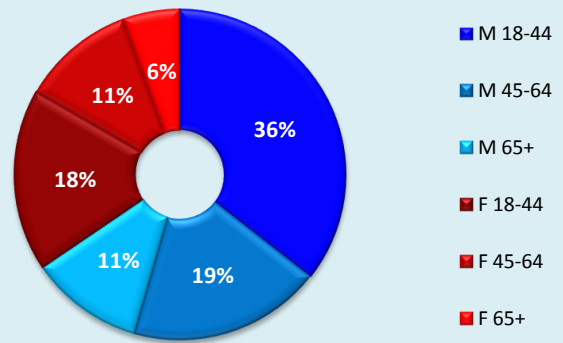
5. ETHNICITY

Percentage breakdown of all Bolton suicides by ethnicity



6. AGE/SEX

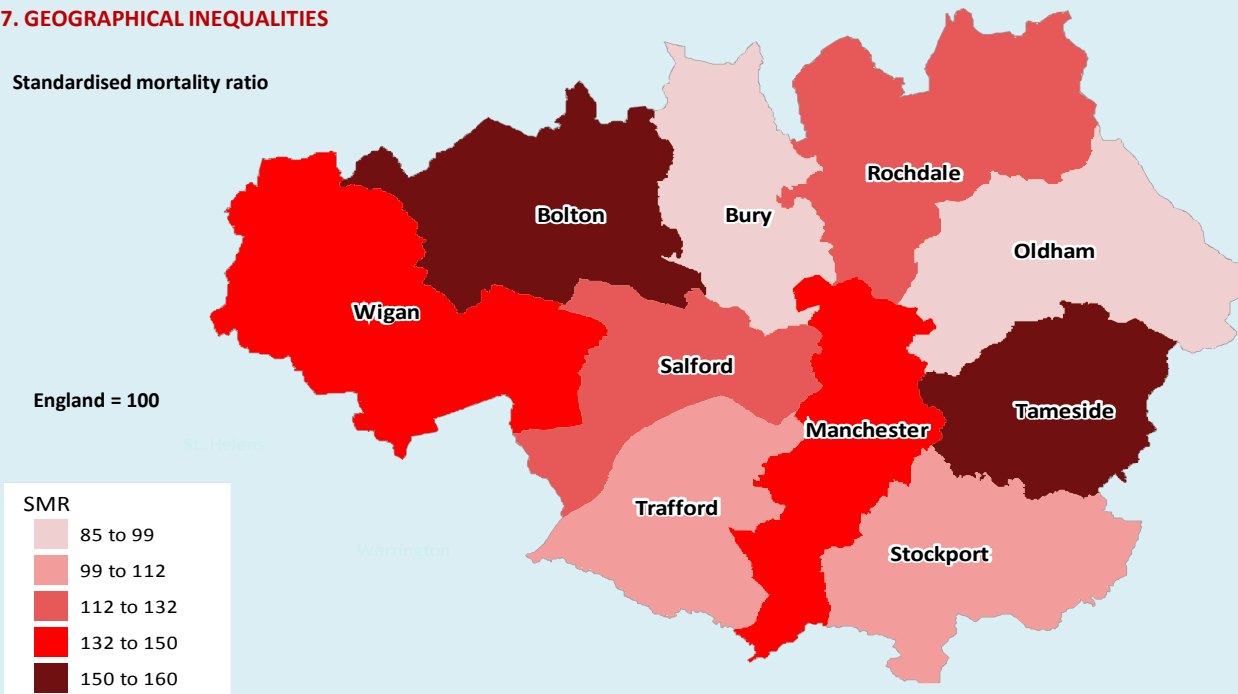
Percentage breakdown of all Bolton suicides by age/sex group



7. GEOGRAPHICAL INEQUALITIES

Standardised mortality ratio

England = 100



© Crown copyright and/or database right 2009. All rights reserved. Licence number 100026920
InSite © CACI Ltd, 2012 All rights reserved

8. NOTES

1. Source: National Centre for Health Outcomes Development (NCHOD); 2008/10
2. Source: National Centre for Health Outcomes Development (NCHOD); 1994-2010
3. Source: Public Health Mortality File, Office of National Statistics (ONS); 2005/09
4. Source: National Centre for Health Outcomes Development (NCHOD); 2008/10
- 5.6. Source: Suicide Prevention Partnership Annual Report 2010; 2008-2010
7. Source: National Centre for Health Outcomes Development (NCHOD); 2008/10

**Joint Strategic
Needs Assessment**

NHS Bolton

**Bolton
Vision**